

Family **MYXINIDAE**, Hagfishes

© RW Leslie

Eptatretus hexatrema, sixgill hagfish, 51 cm TL, gill apertures inset (South Africa).



© MM Mincarone

Eptatretus octatrema, eightgill hagfish, 28 cm TL, syntype (South Africa).



© Alwheim © IMR

Eptatretus profundus, fivegill hagfish, 68 cm TL (South Africa).



© Alwheim © IMR

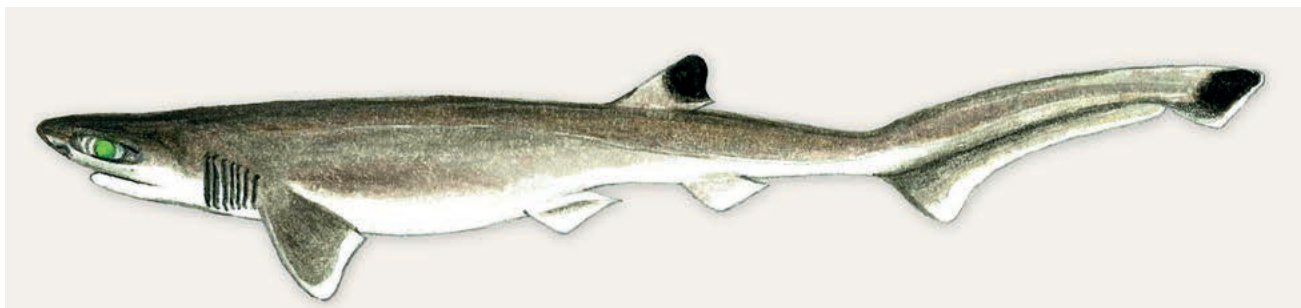
Myxine capensis, Cape hagfish, 40 cm TL (Mozambique).

Family **CHLAMYDOSELACHIDAE**, Frilled sharks

© Alvheim © IMR

Chlamydoselachus africana, southern African frilled shark, 125 cm TL (Namibia).

© R Coelho, CCMAR

Chlamydoselachus anguineus, frilled shark, 137 cm TL, male (Portugal, NE Atlantic).Family **HEXANCHIDAE**, Cow sharks*Heptranchias perlo*, sharpnose sevengill shark, 70 cm TL.

AD Connell © NRF-SAIAB

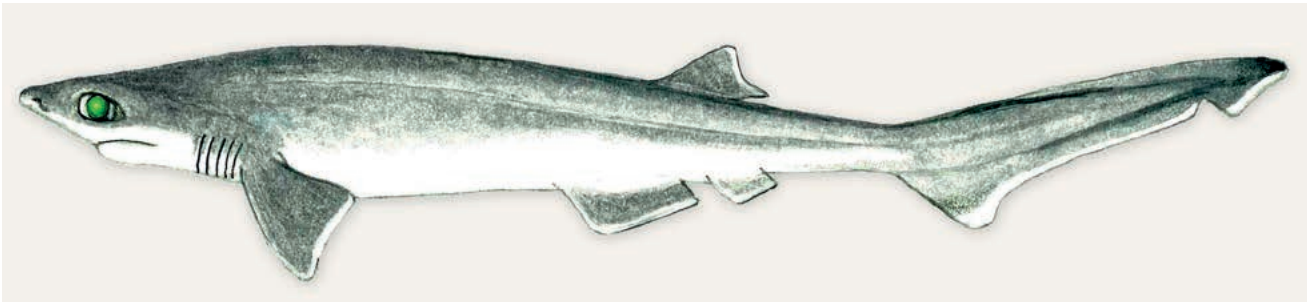
Heptranchias perlo, sharpnose sevengill shark, juvenile (South Africa).

Family **HEXANCHIDAE**, Cow sharks

KV Akhilesh © CMFRI

Hexanchus griseus, bluntnose sixgill shark, 89 cm TL (SW India).

Source: CFSA

Hexanchus griseus, bluntnose sixgill shark, 97 cm TL (Japan).*Hexanchus nakamurai*, bigeyed sixgill shark, 100 cm TL (Nazareth Bank).

AD Connell © NRF-SAIAB

Hexanchus nakamurai, bigeyed sixgill shark, 89 cm TL (South Africa).

Family **HEXANCHIDAE**, Cow sharks



Source: CFSA

Notorynchus cepedianus, sevengill shark, 180 cm TL, subadult female (Japan).

Family **ECHINORHINIDAE**, Bramble sharks

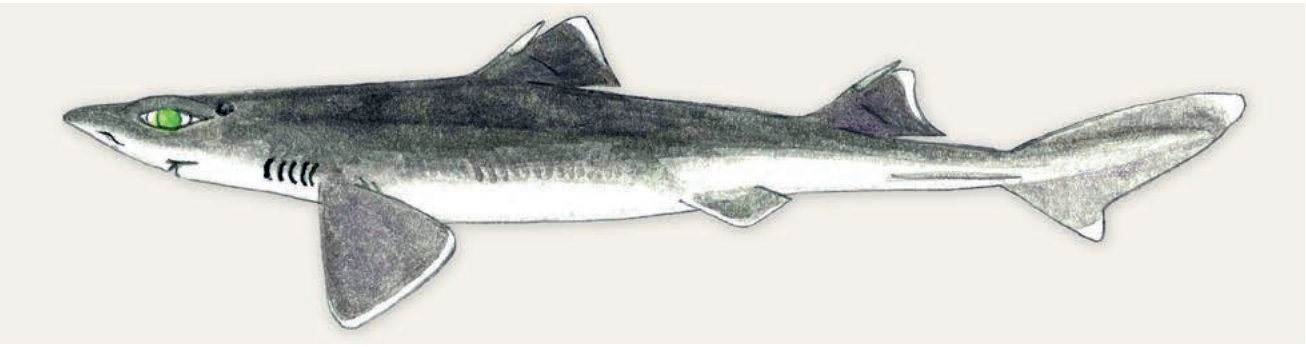


KV Akhilesh © CMFRI

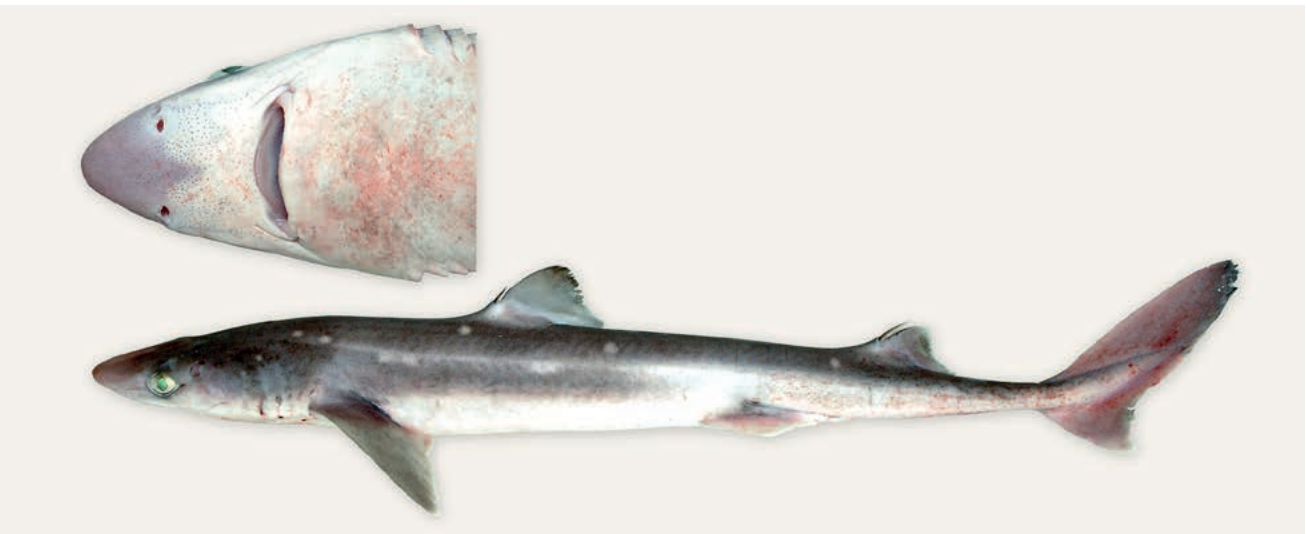
Echinorhinus brucus, bramble shark, 39 cm TL (SW India).



Echinorhinus brucus, bramble shark, 250 cm TL, female (South Africa).

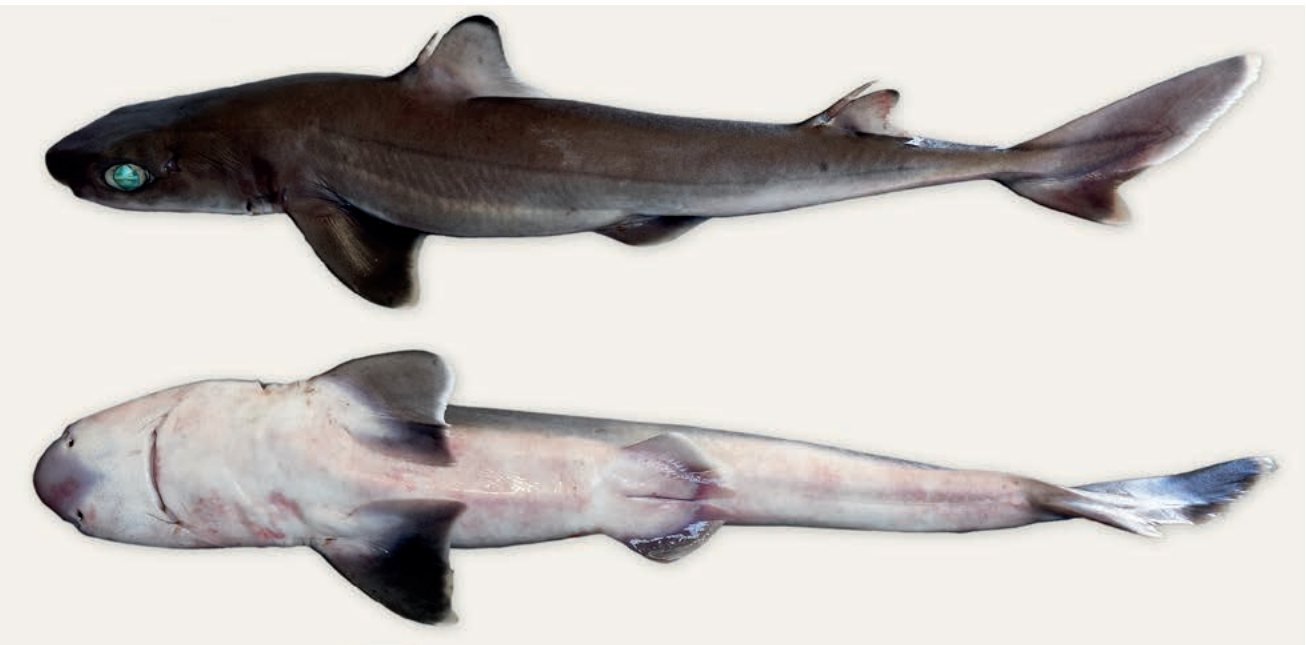
Family **SQUALIDAE**, Dogfishes

Cirrhigaleus asper, roughskin spurdog, 38 cm TL, female (Comoros).



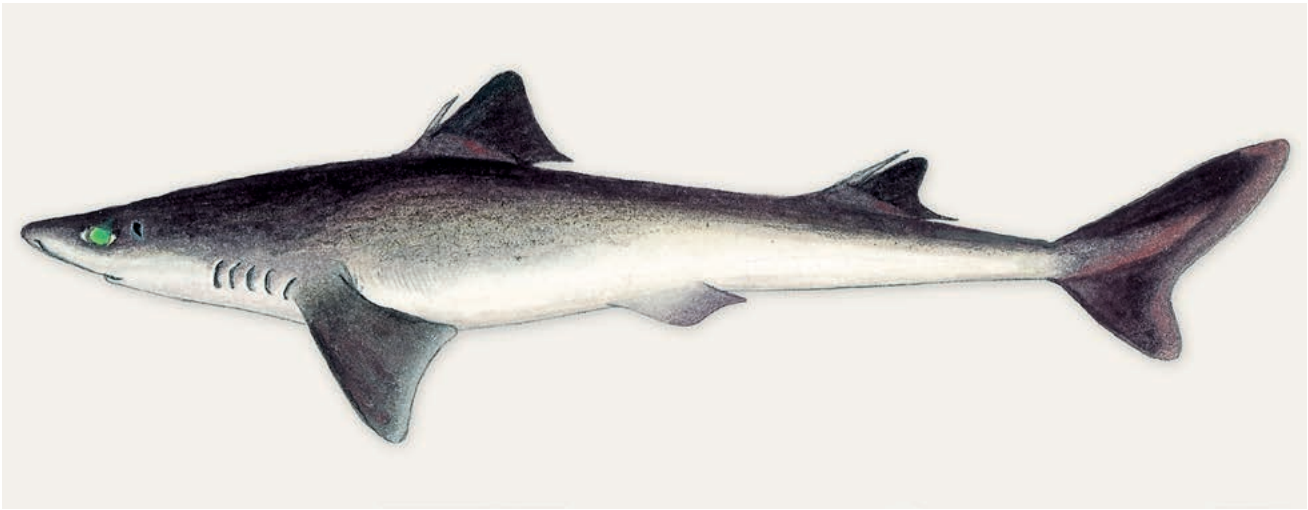
Squalus acanthias, spotted spiny dogfish, 77 cm TL (South Africa).

O Alvhheim © IMR



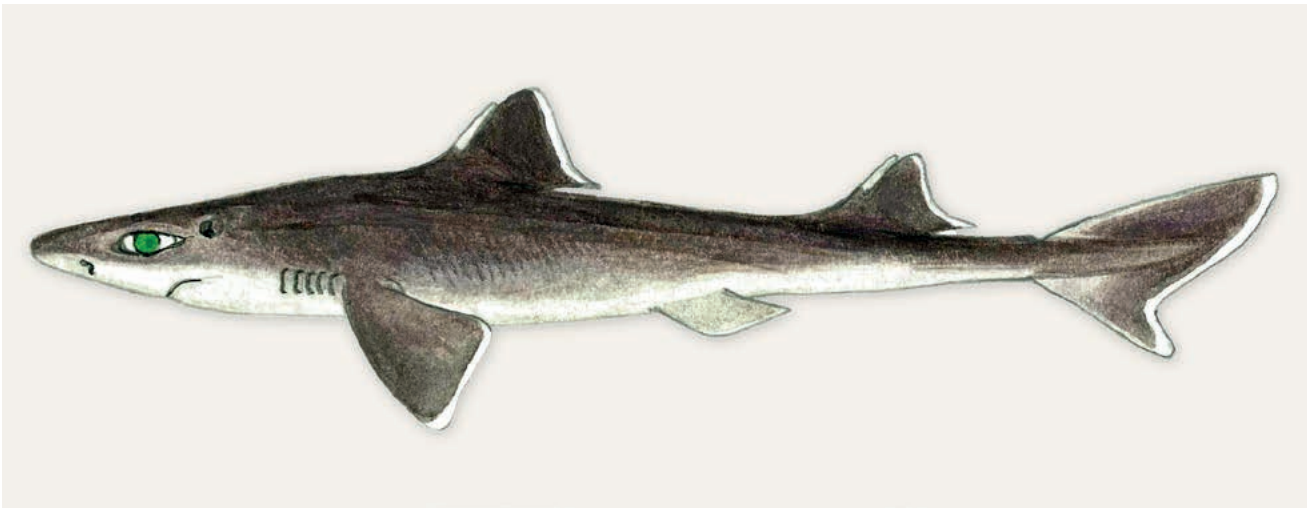
Squalus acutipinnis, shortnose spurdog, 48 cm TL (South Africa).

O Alvhheim © IMR

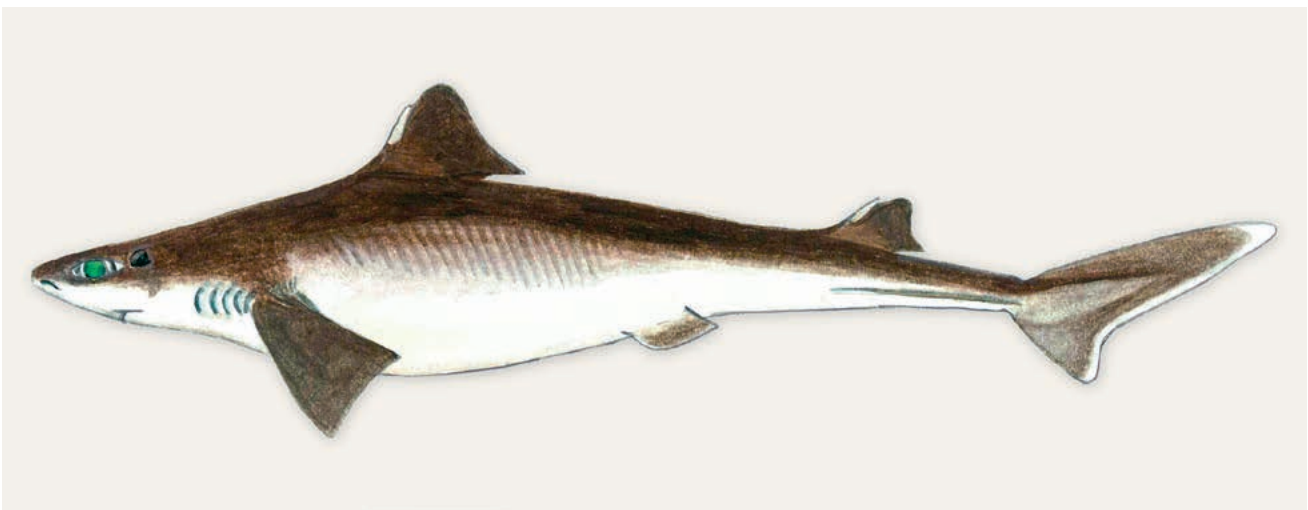
Family **SQUALIDAE**, Dogfishes

Source: CFSA

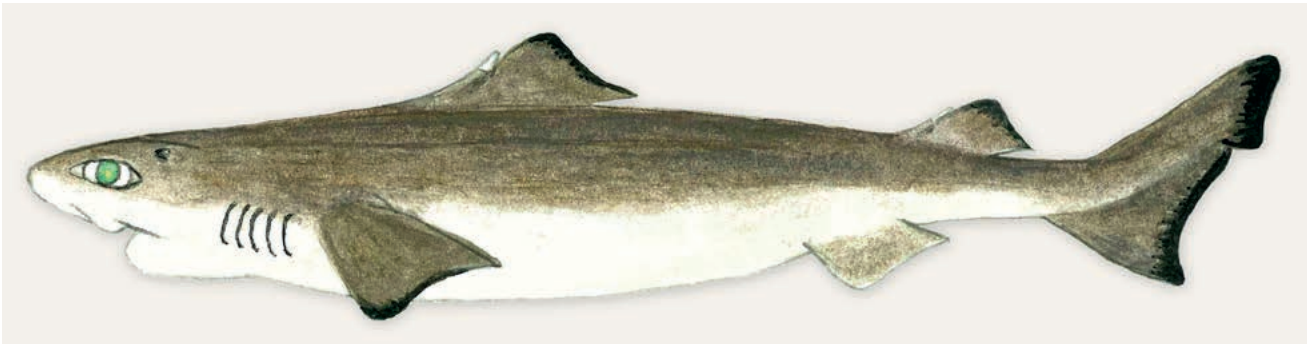
Squalus acutipinnis, shortnose spurdog, 56 cm TL, mature female (South Africa).



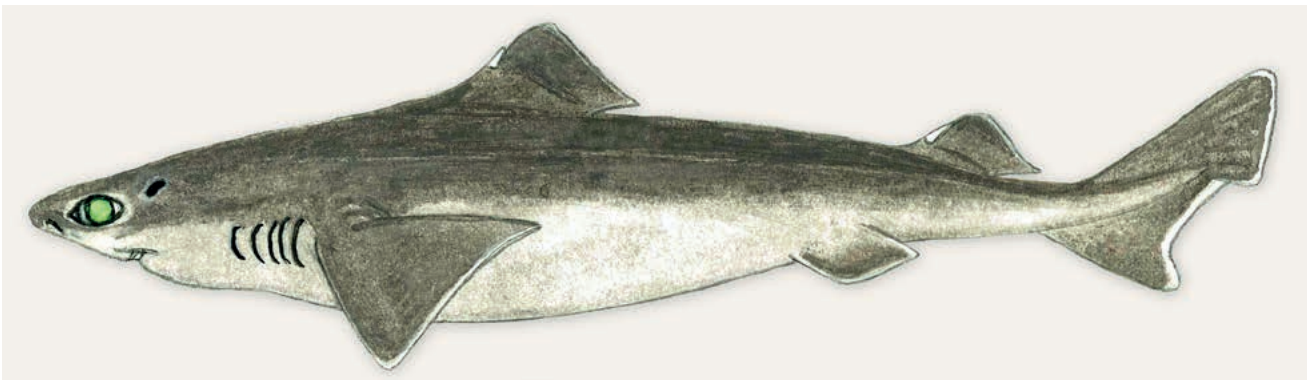
Squalus blainville, longnose spurdog, 96 cm TL (South Africa).



Squalus mitsukurii, shortspine spurdog, 92 cm TL (Mozambique).

Family **CENTROPHORIDAE**, Gulper sharks

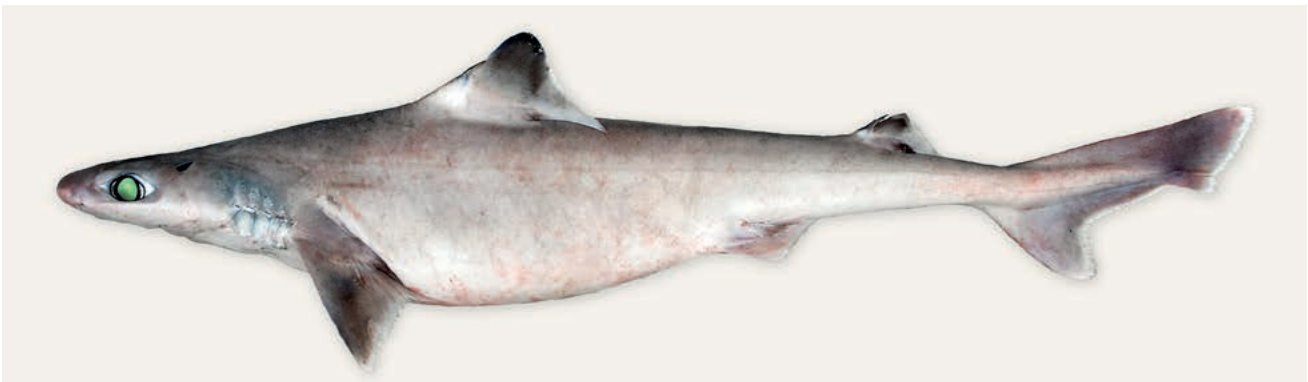
Centrophorus atomarginatus, blackfin gulper shark, ~70 cm TL (Namibia).



Centrophorus granulosus, gulper shark, 90 cm TL.



Centrophorus granulosus, gulper shark, 110 cm TL (Mozambique).



Centrophorus moluccensis, smallfin gulper shark, 74 cm TL (Mozambique).

O. Alveim © IMR

O. Alveim © IMR

Family **CENTROPHORIDAE**, Gulper sharks

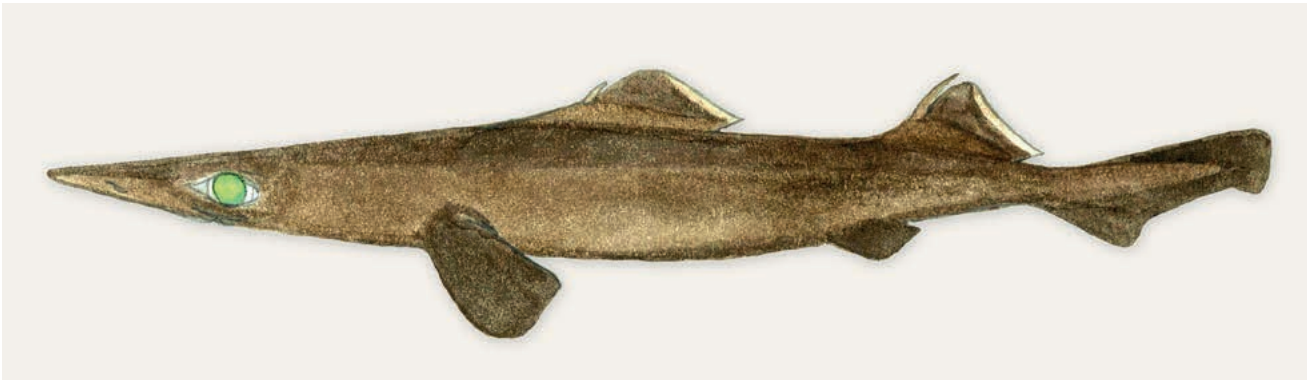


Deania calceus, birdbeak dogfish, 40 cm TL (Namibia).

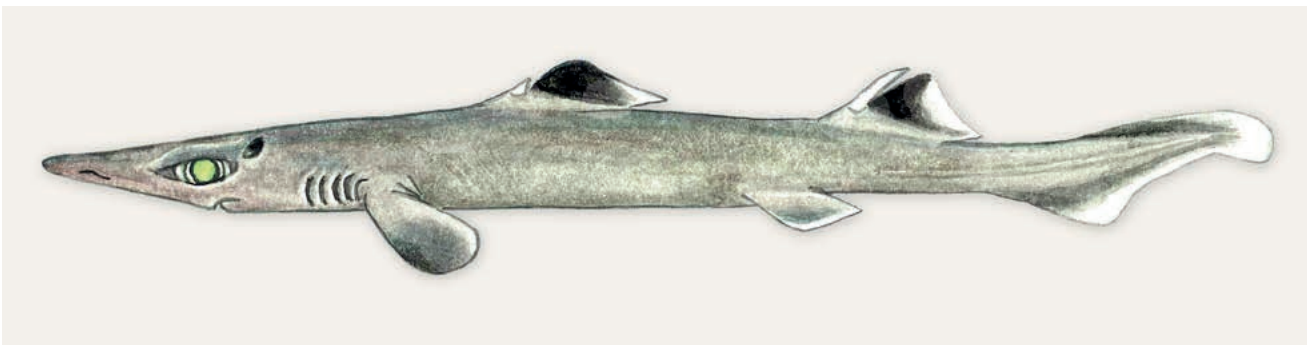


KV Akhlesh © CMFRI

Deania profundorum, arrow-head dogfish, 25 cm TL (SW India).



Deania profundorum, arrow-head dogfish, 47 cm TL (Madagascar).



Deania quadrispinosa, longsnout dogfish, 39 cm TL (Mozambique).

Family **ETMOPTERIDAE**, Lanternsharks



© A Dolgov, PINRO

Centroscyllium fabricii, black dogfish, 60 cm TL (Iceland).



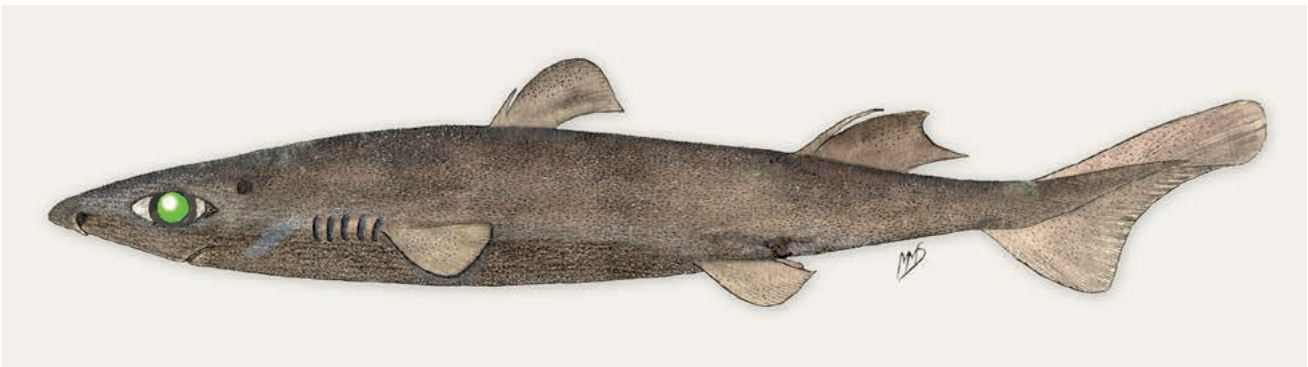
© ST Fennessy, ORI/SAAMBR

Etmopterus compagnoi, brown lanternshark, 32 cm TL (South Africa).



AD Connell © NRF-SAAB

Etmopterus compagnoi, brown lanternshark (South Africa).



Source: SFSA

Etmopterus granulosus, southern lanternshark, 41 cm TL (WIO).

Family **ETMOPTERIDAE**, Lanternsharks



O Alvhelm © IMR/ASCLME

Etmopterus pusillus, smooth lanternshark, 27 cm, 30 cm and 44 cm TL (Sapmer Seamount).



PC Heemstra © NRF-SAIAB

Etmopterus sculptus, sculpted lanternshark, 14 cm TL (Mozambique). #



PC Heemstra © NRF-SAIAB

Etmopterus sculptus, sculpted lanternshark, 37 cm TL (Mozambique). #

= no species account

Family **ETMOPTERIDAE**, Lanternsharks

PC Heemstra © NRF-SAIAB

Etmopterus sentosus, thorny lanternshark, 20 cm TL (N Mozambique).

O Alvheim © IMR

Etmopterus sentosus, thorny lanternshark, 26 cm TL; rows of enlarged denticles above pectoral fin (inset) (Mozambique).Family **SOMNIOSIDAE**, Sleeper sharks

O Alvheim © IMR

Centroscyrnus coelolepis, Portuguese dogfish, 86 cm TL (Namibia).

© S Weigmann, ZMH

Centroscyrnus owstonii, roughskin dogfish, 35 cm TL, juvenile male, preserved specimen (SW Madagascar).

Family **SOMNIOSIDAE**, Sleeper sharks



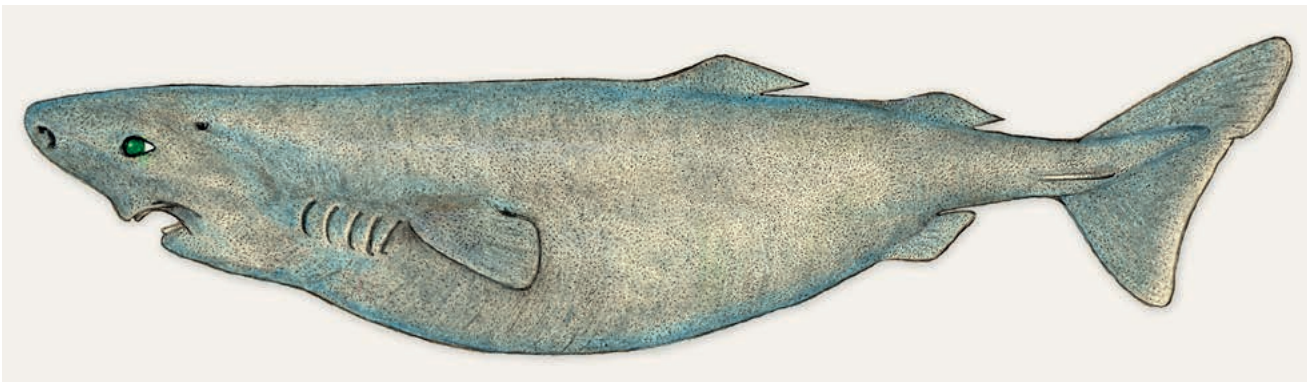
KV Akhilesh © CMFRI

Centroselachus crepidater, longnose velvet dogfish, 66 cm TL (SW India).



© C.Duffy, CC BY-NC 3.0

Scymnodon macracanthus, largespine velvet dogfish, 130 cm TL, female (New Zealand).



Somniosus antarcticus, southern sleeper shark, ~2 m TL (composite; Southern Ocean).



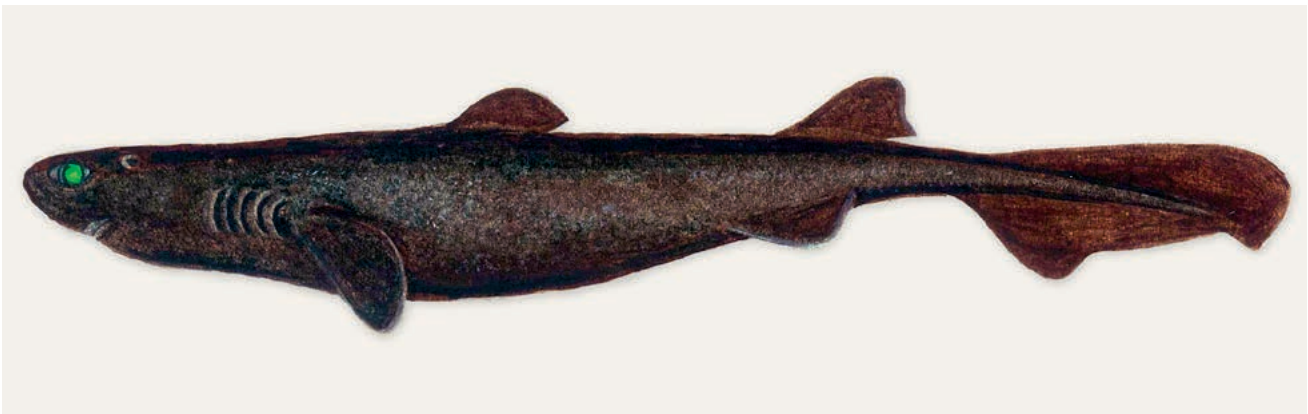
© RW Leslie

Zameus squamulosus, velvet dogfish, ~32 cm TL (South Africa).

Family **OXYNOTIDAE**, Roughsharks

O Alvhelm, © IMR

Oxynotus centrina, angular roughshark, 38 cm TL (Ghana).

Family **DALATIIDAE**, Kitefin sharks

Dalatias licha, kitefin shark, 42 cm TL (Mozambique).



© S Weigmann, ZMH

Euprotomicrus bispinatus, pygmy shark, 24 cm TL, female, preserved specimen (Atlantic Ocean).

Family **DALATIIDAE**, Kitefin sharks

© S Weigmann, ZMH

Heteroscymnoides marleyi, longnose pygmy shark, 37 cm TL, adult male, preserved specimen (Atlantic Ocean).



© JE Randall, Bishop Museum

Isistius brasiliensis, cookiecutter shark, 33 cm TL (Hawaii).



© M Harris

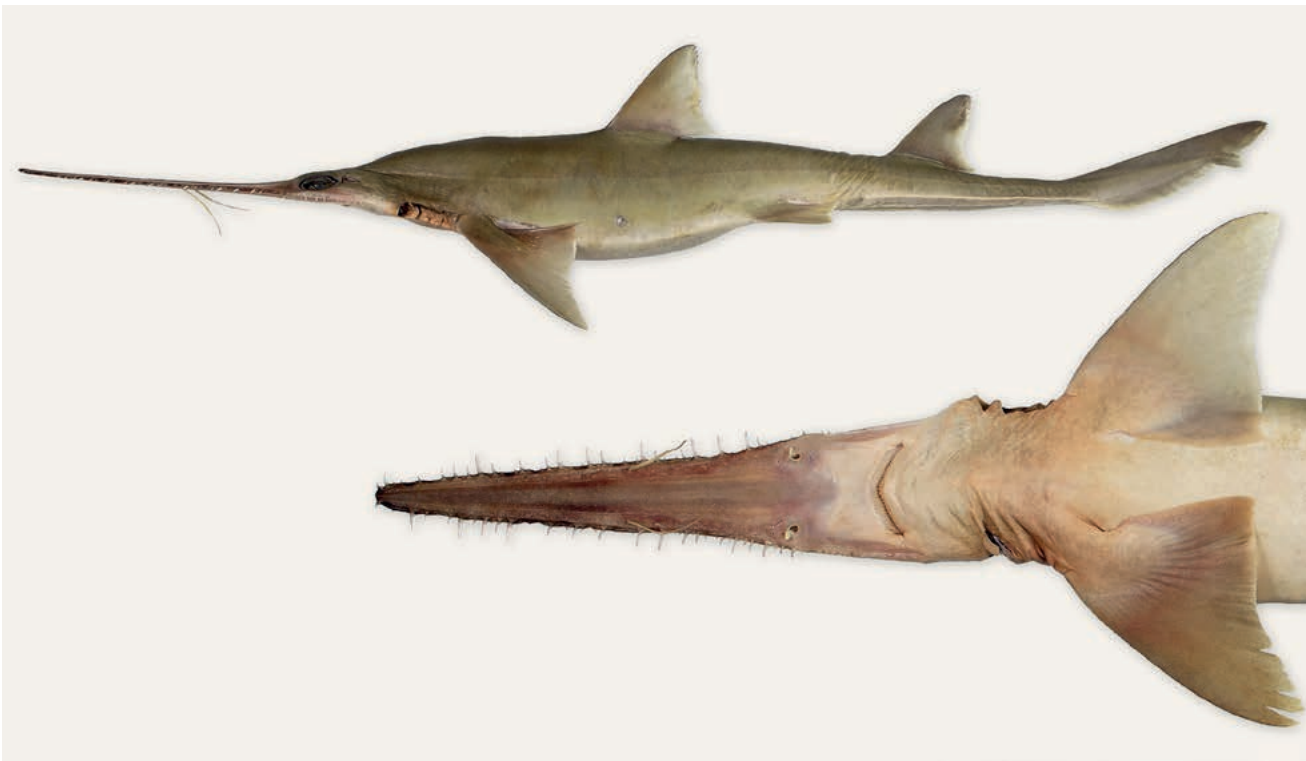
Isistius brasiliensis, cookiecutter shark, ~48 cm TL, female (Mexico).



© S Weigmann, ZMH

Squaliolus laticaudus, spined pygmy shark, 24 cm TL, female, preserved specimen (Atlantic Ocean).

Family **PRISTIOPHORIDAE**, Sawsharks



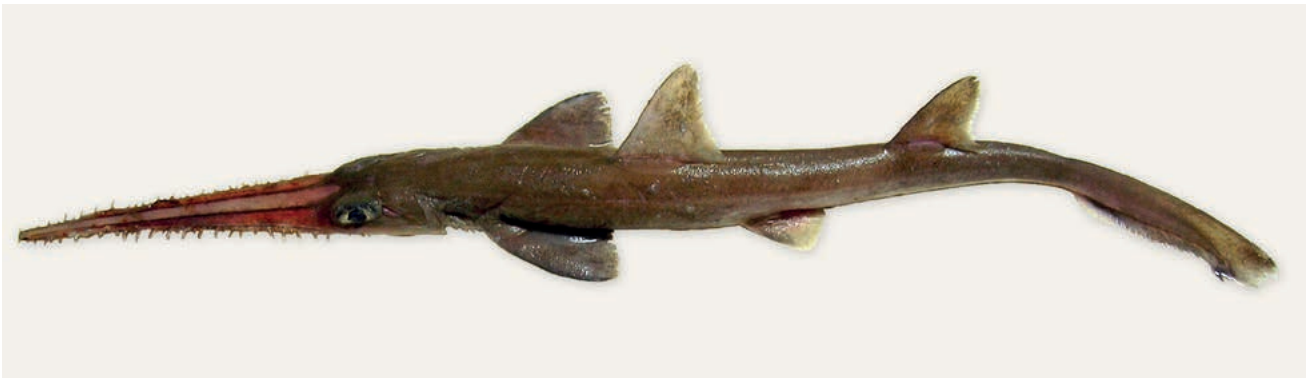
© S Weigmann, ZMH

Pliotrema annae, Zanzibar sawshark, 98 cm TL, female holotype (Tanzania). #



O Alvheim © IMR/ASCLME

Pliotrema kajae, 97 cm TL, adult male paratype (Nazareth Bank). #



AD Connell © NRF-SAIB

Pliotrema warreni, sixgill sawshark, ~48 cm TL (South Africa).

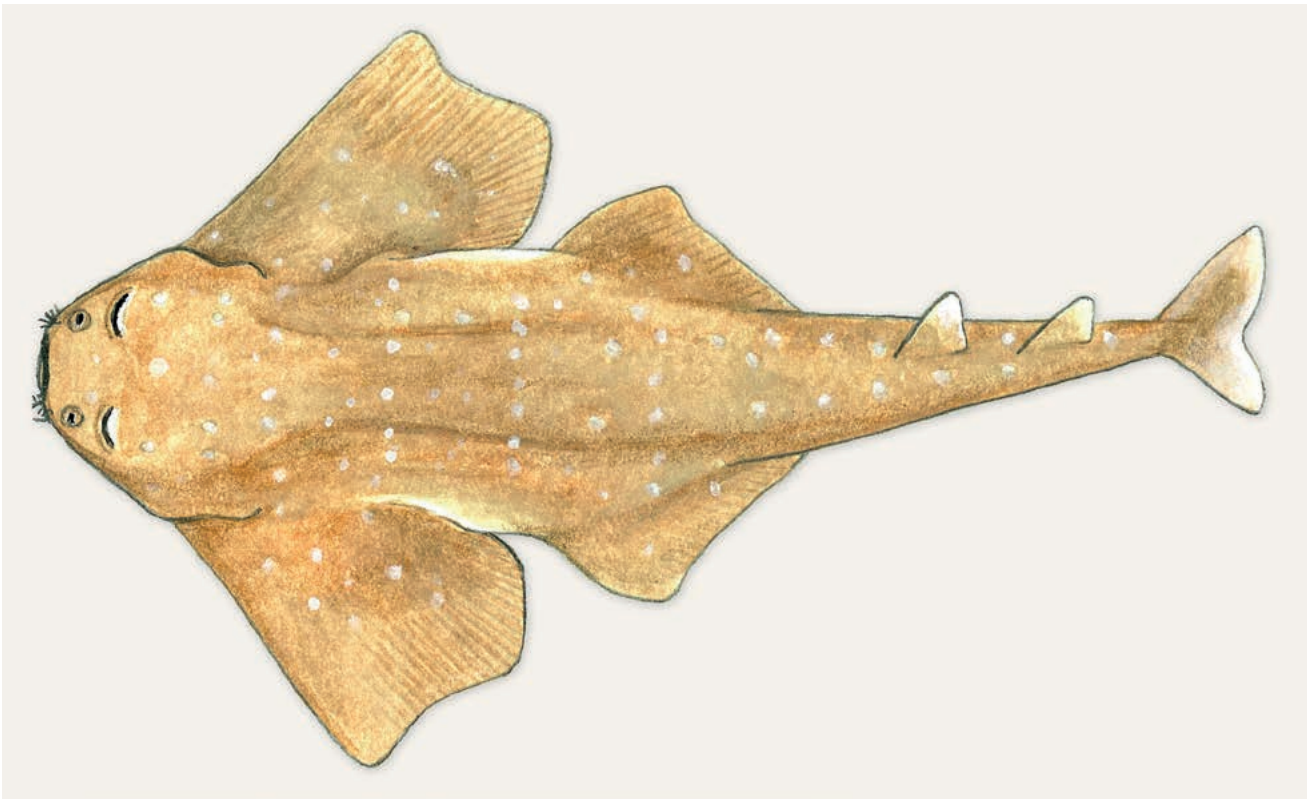
= no species account

Family **SQUATINIDAE**, Angel sharks

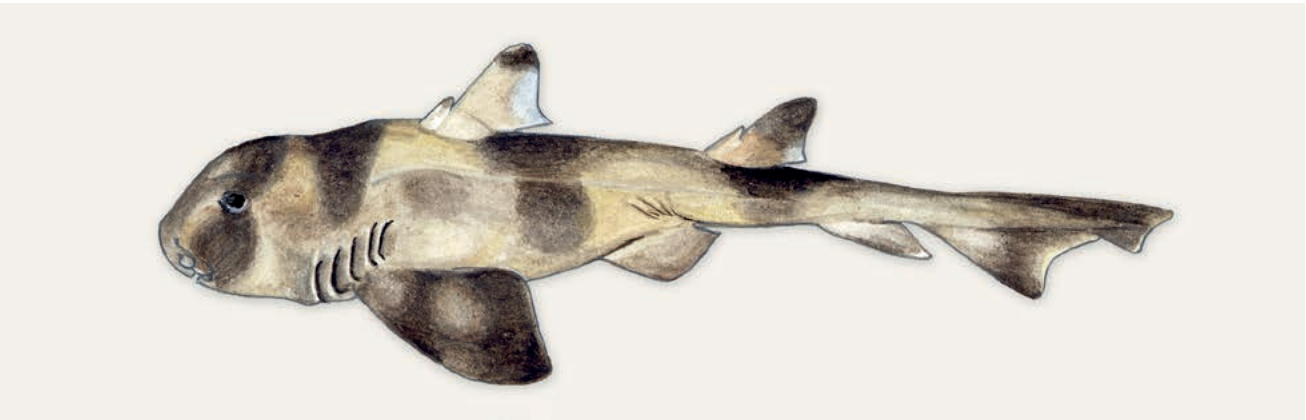


O. Alvrheim © IMR

Squatina africana, African angel shark, 29 cm TL (Mozambique).



Squatina africana, African angel shark, 100 cm TL (Mozambique).

Family **HETERODONTIDAE**, Bullhead sharks

Heterodontus omanensis, Oman bullhead shark, ~50 cm TL (Oman).

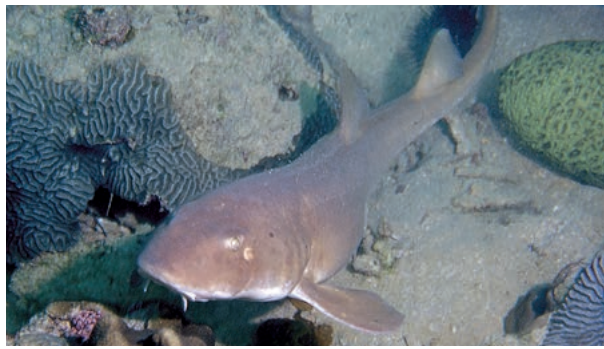


Heterodontus ramalheira, whitespotted bullhead shark, 39 cm TL, immature female; 18 cm TL, hatchling (both South Africa).



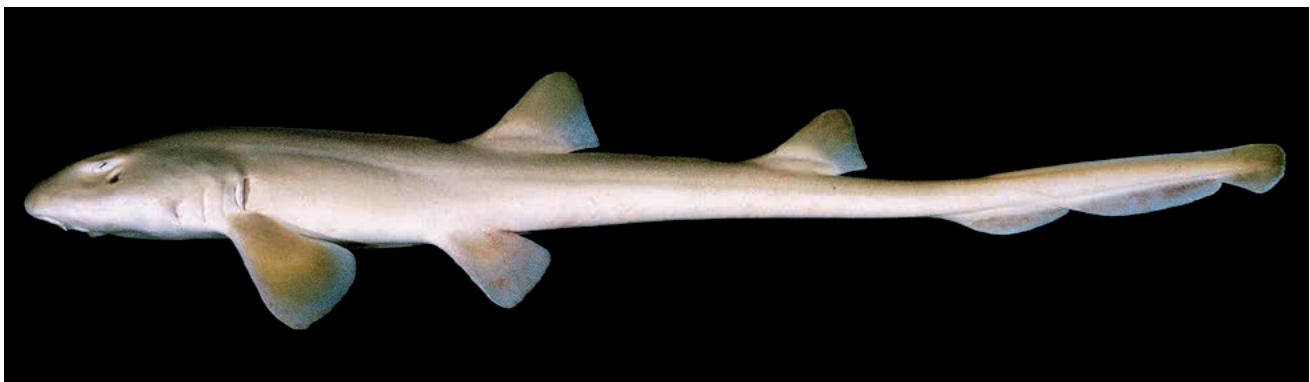
Heterodontus ramalheira, whitespotted bullhead shark, 95 cm TL, adult (Mozambique).

Family **HEMISCYLLIIDAE**, Bamboo sharks



© R Field

Chiloscyllium arabicum, Arabian bamboo shark (Oman).



© JE Randall, Bishop Museum

Chiloscyllium arabicum, Arabian bamboo shark, 43 cm TL (Kuwait).



KK Bineesh © CMFRI

Chiloscyllium griseum, grey bamboo shark, 13 cm TL, juvenile (SW India).



KV Akhilesh © CMFRI

Chiloscyllium griseum, grey bamboo shark, 28 cm TL, juvenile (SW India).

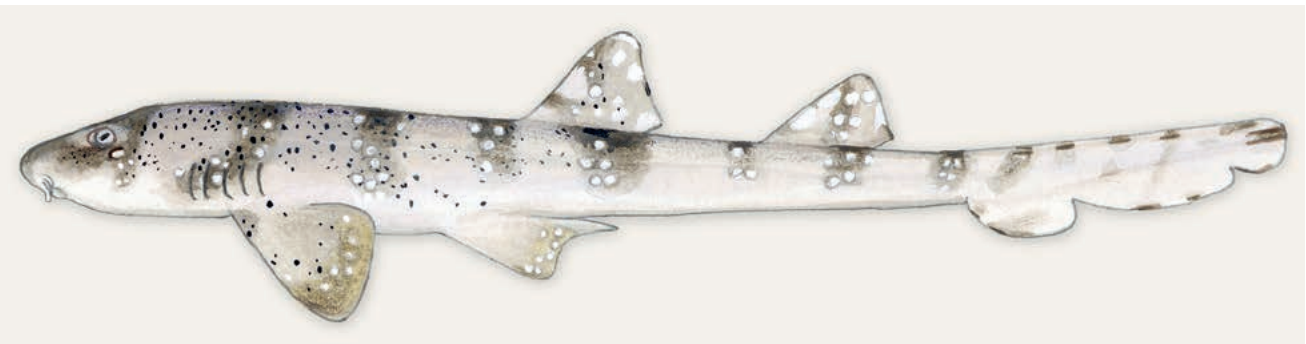
Family **HEMISCYLLIIDAE**, Bamboo sharks

Chiloscyllium griseum, grey bamboo shark, 64 cm TL, adult (Indian Ocean.)



© S Weigmann, ZMH

Chiloscyllium indicum, slender bamboo shark, 41 cm TL, adult male, preserved specimen (Thailand).



Chiloscyllium plagiosum, whitespotted bamboo shark, 67 cm TL (Philippines).



Chiloscyllium punctatum, brownbanded bamboo shark, 15 cm TL, juvenile male (Arabian Sea).

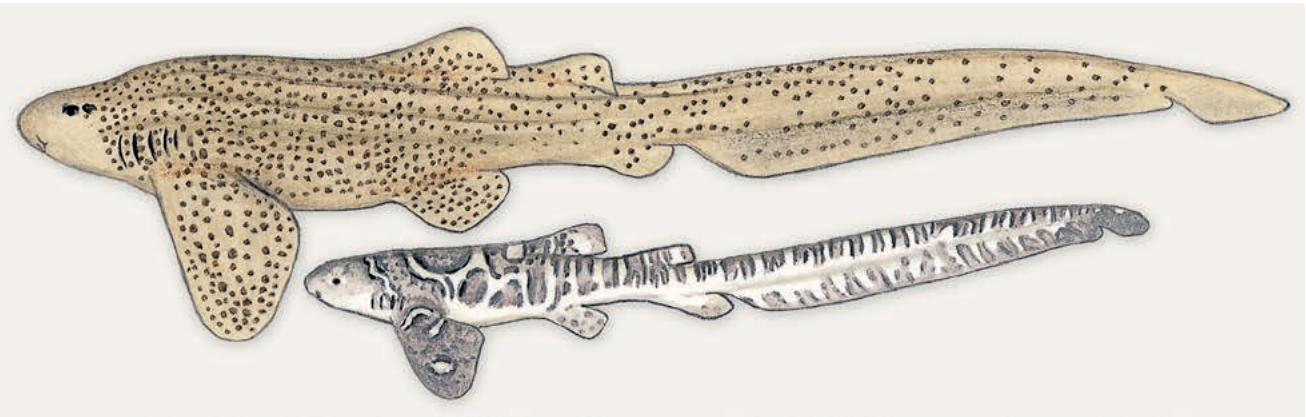
Family **HEMISCYLLIIDAE**, Bamboo sharks



© S Kimura, FRLM

Chiloscyllium punctatum, brownbanded bamboo shark, 47 cm TL (Thailand).

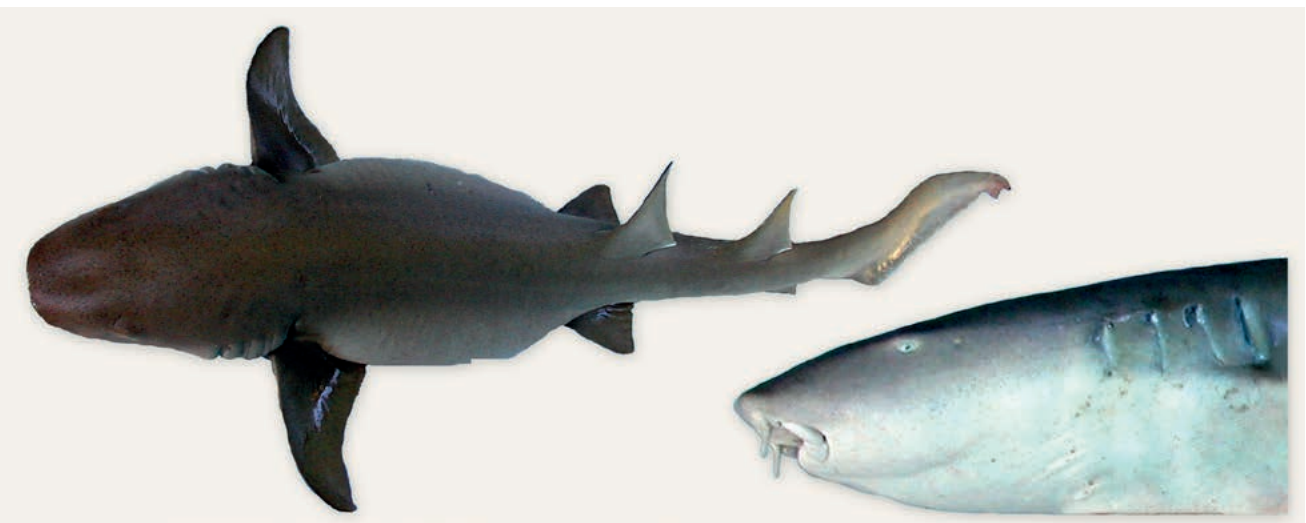
Family **STEGOSTOMATIDAE**, Zebra shark



Source: CFSA

Stegostoma tigrinum, zebra shark, ~120 cm TL, subadult (South Africa); 58 cm TL, juvenile (Bahrain).

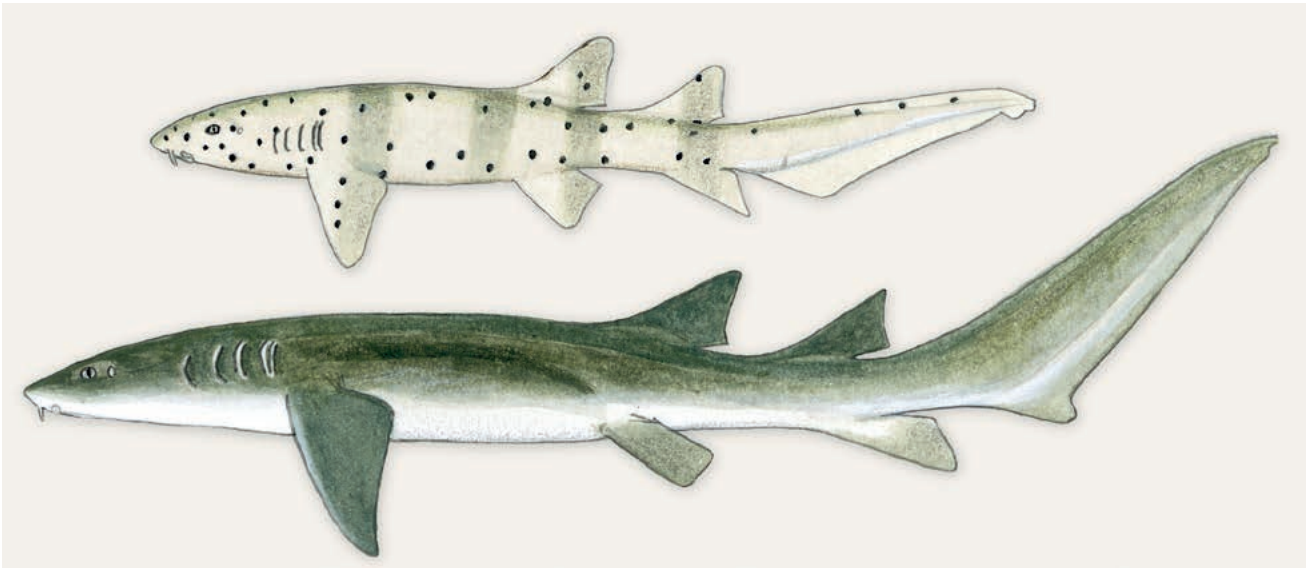
Family **GINGLYMOSTOMATIDAE**, Nurse sharks



PC Heemstra © NRF-SAIAB

Nebrius ferrugineus, tawny nurse shark, 120 cm TL (Seychelles).

Family **GINGLYMOSTOMATIDAE**, Nurse sharks



Nebrius ferrugineus, tawny nurse shark, juvenile (Mauritius); 270 cm TL, adult (WIO).



Pseudoginglymostoma brevicaudatum, shorttail nurse shark, ~65 cm TL, female (SW Indian Ocean).

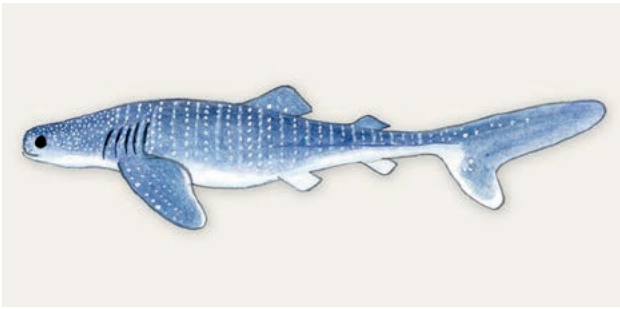
Family **RHINCODONTIDAE**, Whale shark



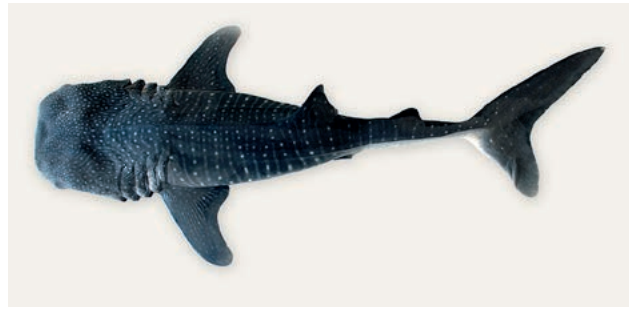
Rhincodon typus, whale shark, 3.5 m, juvenile (South Africa).

Source: CFSa

Family **RHINCODONTIDAE**, Whale shark



Rhincodon typus, whale shark, 60 cm TL, juvenile (Taiwan).



Rhincodon typus, whale shark, juvenile (SW India).

KV Akhilesh © CMFRI

Family **CARCHARIIDAE**, Raggedtooth shark



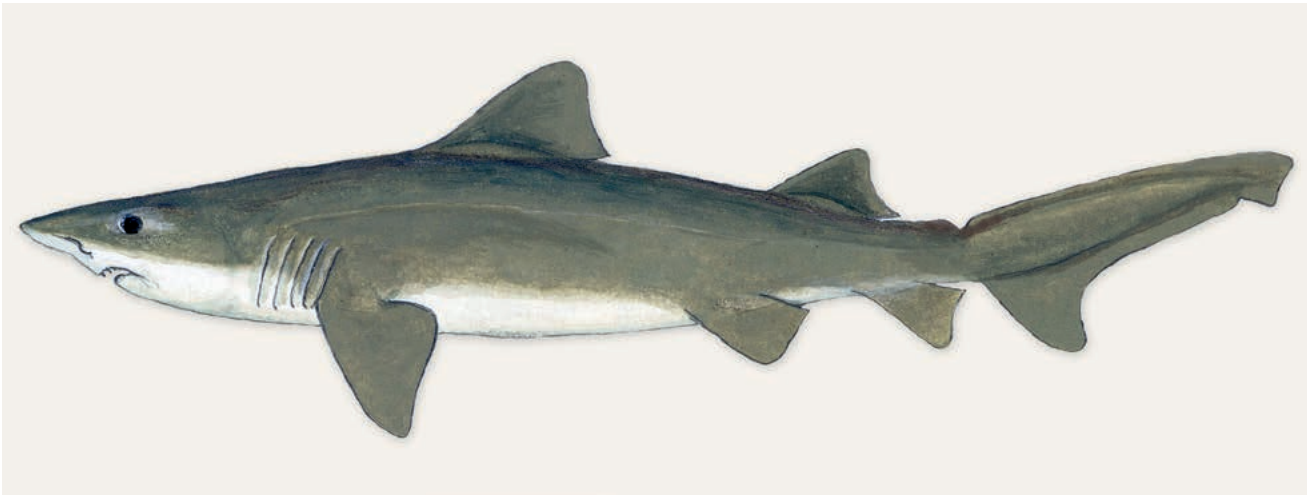
Carcharias taurus, raggedtooth shark, 103 cm TL, immature male (South Africa).

Source: CFSA

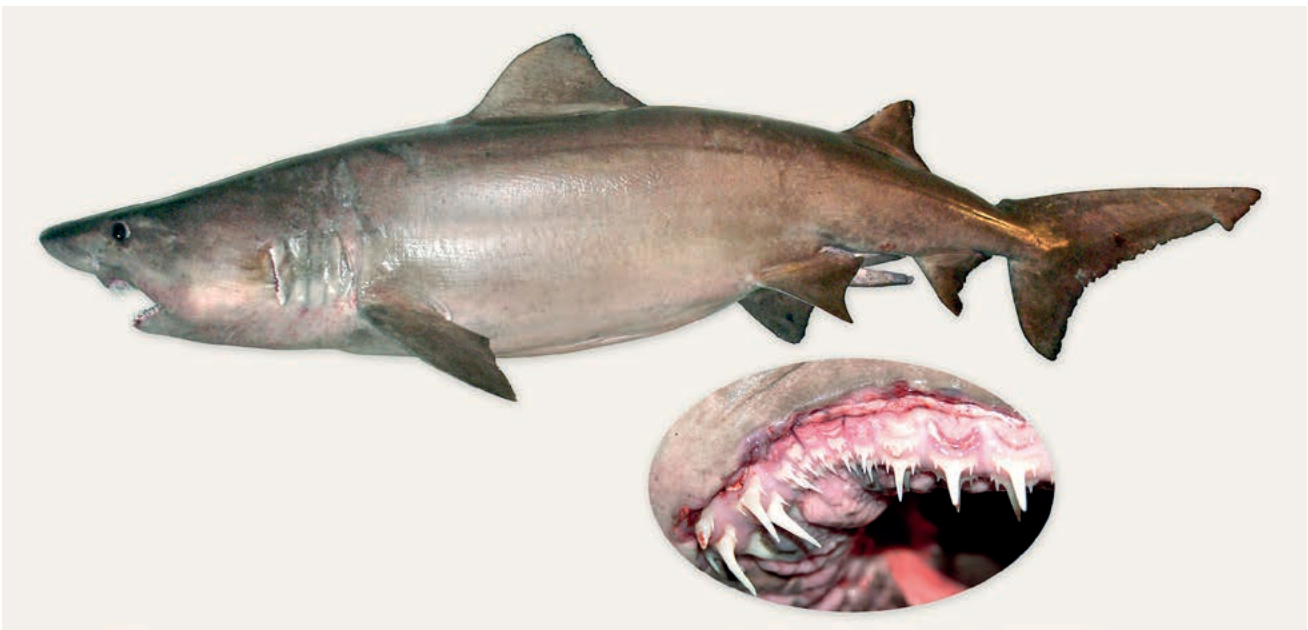


Carcharias taurus, raggedtooth shark aggregation (South Africa).

© DR King

Family **ODONTASPIDIDAE**, Sandtiger sharks

Odontaspis ferox, smalltooth sandtiger, 1.6 m TL (Japan).



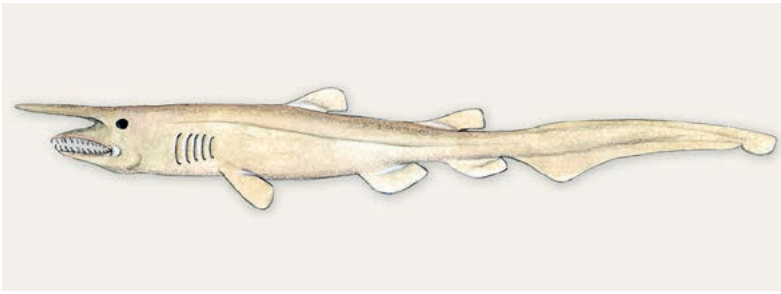
O. Alvsheim © IMR

Odontaspis ferox, smalltooth sandtiger, 3.1 m TL male (Nigeria).



Odontaspis noronhai, bigeye sandtiger (Indian Ocean).

Family **MITSUKURINIDAE**, Goblin shark



Mitsukurina owstoni, goblin shark, 120 cm TL, immature female.



Mitsukurina owstoni, goblin shark, juvenile, with jaws protruded (Australia).

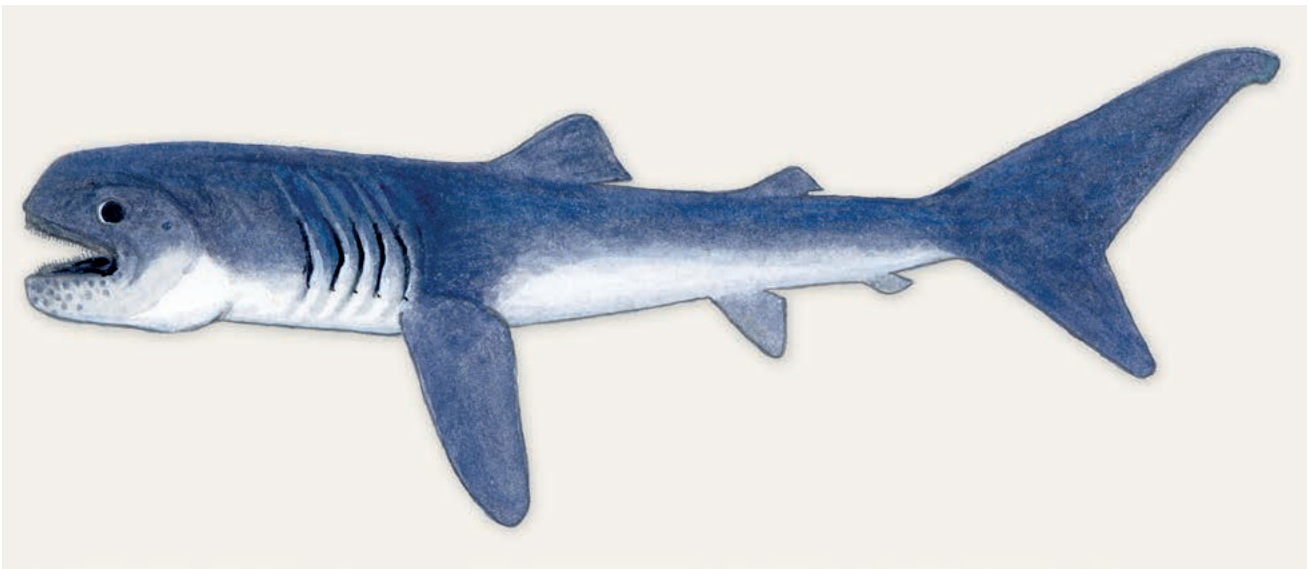
© D.J. Bray, NMV

Family **PSEUDOCARCHARIIDAE**, Crocodile shark



Pseudocarcharias kamoharai, crocodile shark, 120 cm TL (Japan).

Family **MEGACHASMIDAE**, Megamouth shark

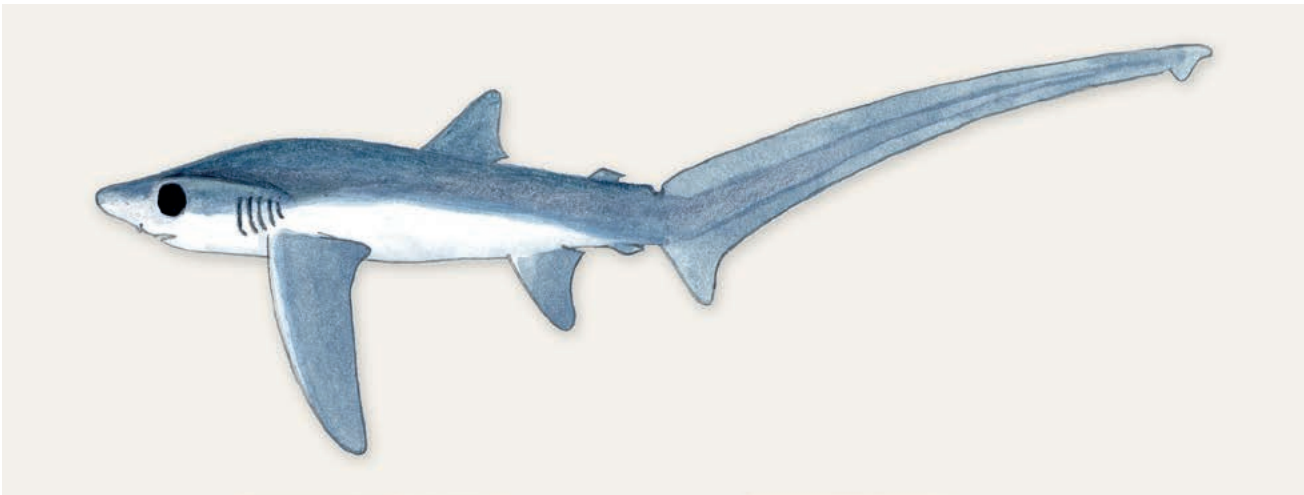


Megachasma pelagios, megamouth shark, 190 cm TL, juvenile male (Indian Ocean).

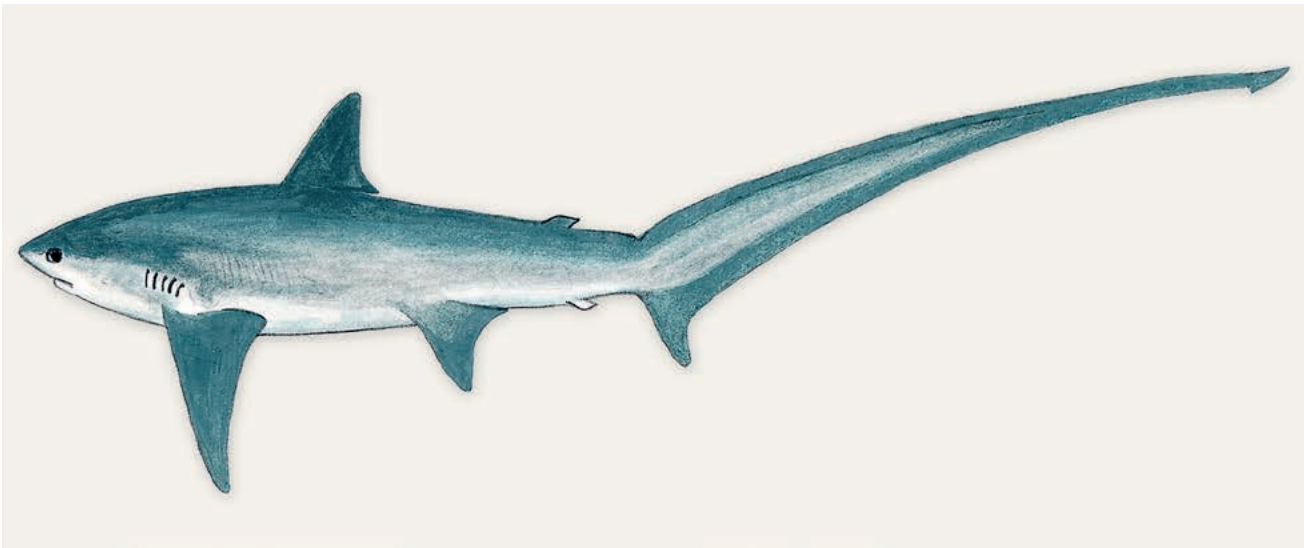
Family **ALOPIIDAE**, Thresher sharks



Alopias pelagicus, pelagic thresher, ~100 cm TL (Japan).



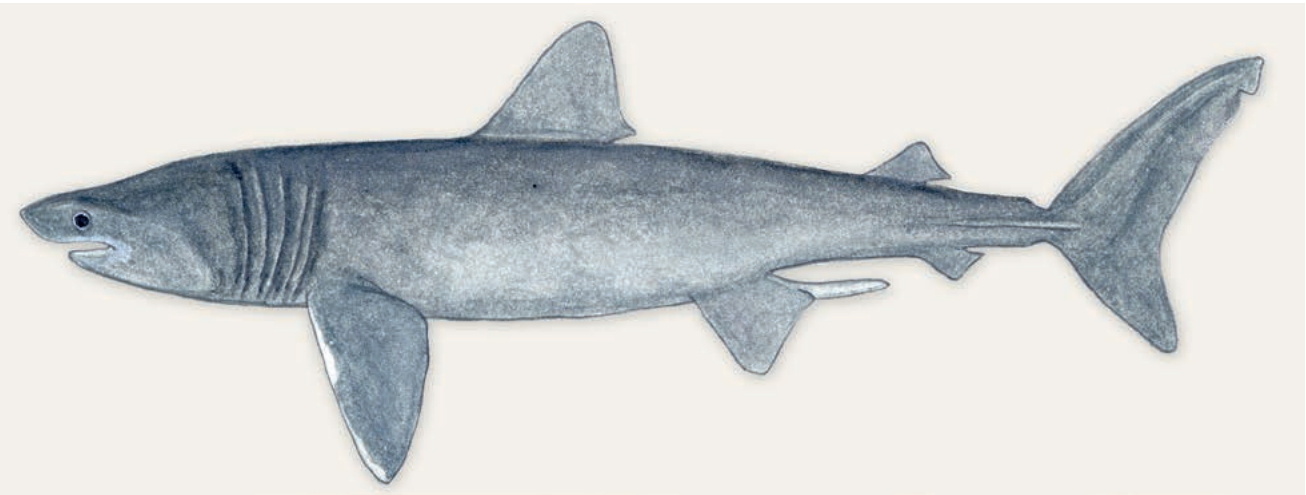
Alopias superciliosus, bigeye thresher, 160 cm TL, immature female (W Atlantic).



Alopias vulpinus, thresher shark, ~3.5 m TL, mature female (Australia).

Source: CFSa

Family **CETORHINIDAE**, Basking shark



Cetorhinus maximus, basking shark (Atlantic Ocean).

Family **LAMNIDAE**, Mackerel sharks



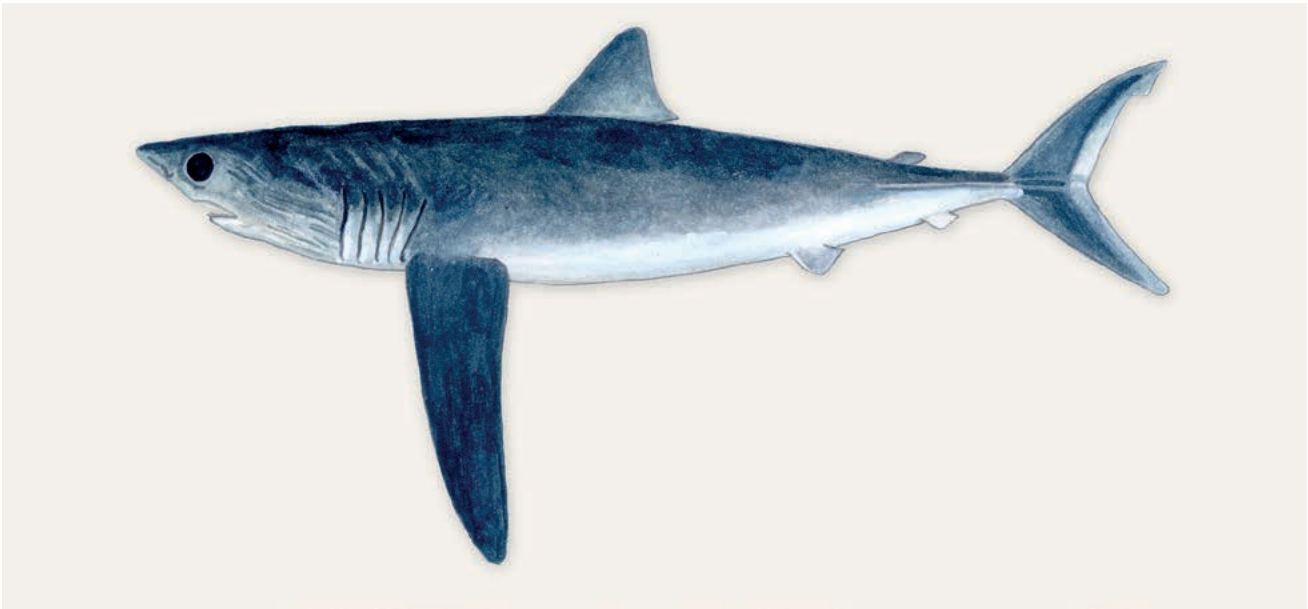
Source: CFSA

Carcharodon carcharias, white shark, ~ 4 m TL, mature male (South Africa).



Source: CFSA

Isurus oxyrinchus, shortfin mako, ~250 cm TL, female (South Africa).

Family **LAMNIDAE**, Mackerel sharks

Isurus paucus, longfin mako, 230 cm TL (Japan).



Source: SSF

Lamna nasus, porbeagle, 94 cm TL, immature male (South Africa).

Family **PENTANCHIDAE**, Deepwater catsharks

O AlVheim © IMR

Bythaelurus clevai, broadhead catshark, 22 cm TL (Mozambique). #

= no species account

Family **PENTANCHIDAE**, Deepwater catsharks



© PJ Clerkin, MLML

Bythaelurus naylori, dusky snout catshark, 45 cm TL, adult male holotype (Southwest Indian Ridge). #



© Alvheim © IMR

Halaelurus lineatus, banded catshark, ~45 cm TL (Mozambique).



© P. Southwood

Halaelurus natalensis, tiger catshark, juvenile (South Africa).



© R. Stevinton

Halaelurus natalensis, tiger catshark (South Africa).

= no species account

Family **PENTANCHIDAE**, Deepwater catsharks

KV Akhlesh © CMFRI

Halaelurus quagga, quagga catshark, 37 cm TL, female (SW India).



O Alvheim © IMR

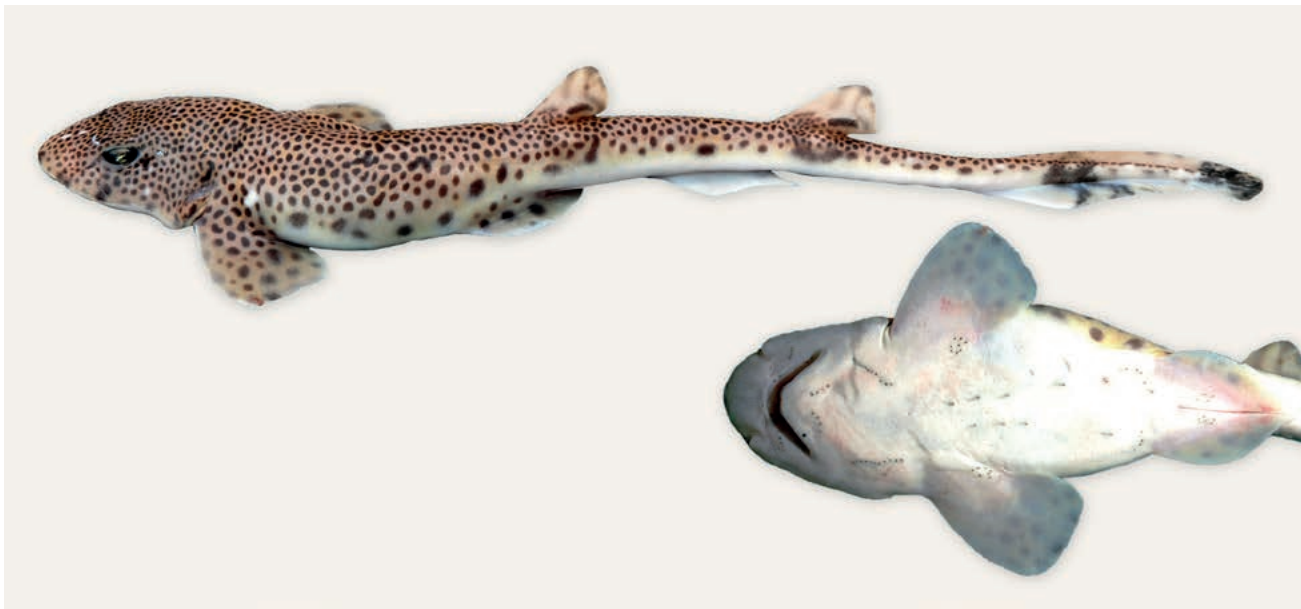
Haploblepharus edwardsii, happy Eddie, 45 cm TL, dorsal view (South Africa).



© J Swanepoel

Haploblepharus fuscus, brown shyshark (South Africa).

Family **PENTANCHIDAE**, Deepwater catsharks



© Alvhheim © IMR

Holohalaelurus grennian, grinning lizard, 26 cm TL (Mozambique).



© B Human

Holohalaelurus punctatus, white-spotted lizard, 30 cm TL, male neotype, preserved specimen (Mozambique).



© RW Lestie

Holohalaelurus regani, lizard, 58 cm TL (South Africa).

Family **PENTANCHIDAE**, Deepwater catsharks

© Alveim © IMR

Holohalaelurus regani, Izak, 15 cm TL, 11 cm TL, juveniles (South Africa).

Family **SCYLIORHINIDAE**, Catsharks

KV Akhilesh © CMFRI

Cephaloscyllium silasi, Indian swellshark, 43 cm TL, and 8-cm-TL egg case (SW India). #



AD Cornell © NRF-SAAB

Cephaloscyllium sufflans, balloon catshark, 20 cm TL (South Africa).

= no species account



SCYLIORHINIDAE: **1** *Atelomycterus marmoratus*, coral catshark, 65 cm TL (Philippines). **2** *Cephaloscyllium silasi*. # **3** *Cephaloscyllium sufflans*, balloon shark, 42 cm TL, immature male (South Africa).

PENTANCHIDAE: **4** *Halaaelurus boesemani*, speckled catshark. **5** *Halaaelurus lineatus*, banded catshark, 48 cm TL, mature female (South Africa). **6** *Halaaelurus natalensis*, tiger catshark, 44 cm TL, mature female (South Africa).* **7** *Halaaelurus quagga*, quagga catshark. **8** *Haploblepharus fuscus*, brown shyshark, 43 cm TL, immature male (South Africa). **9** *Haploblepharus kistnasamyi*, happy chappie, **(a)** 44 cm TL, **(b)** 43 cm TL (both South Africa). **10** *Haploblepharus pictus*, pretty happy, 56 cm TL, mature male (South Africa). **11** *Holohalaaelurus favus*, honeycomb Izak, 37 cm TL (South Africa). **12** *Holohalaaelurus regani*, Izak, 54 cm TL, male (South Africa).

Family **SCYLORHINIDAE**, Catsharks



O Alvheim © IMR

Poroderma africanum, pyjama shark, 42 cm TL (South Africa).



© C de la Harpe

Poroderma pantherinum, leopard catshark, 62 cm TL (South Africa).



PC Heemstra © NRF-SAIAB

Scyliorhinus capensis, yellowspotted catshark, 21 cm TL (South Africa).

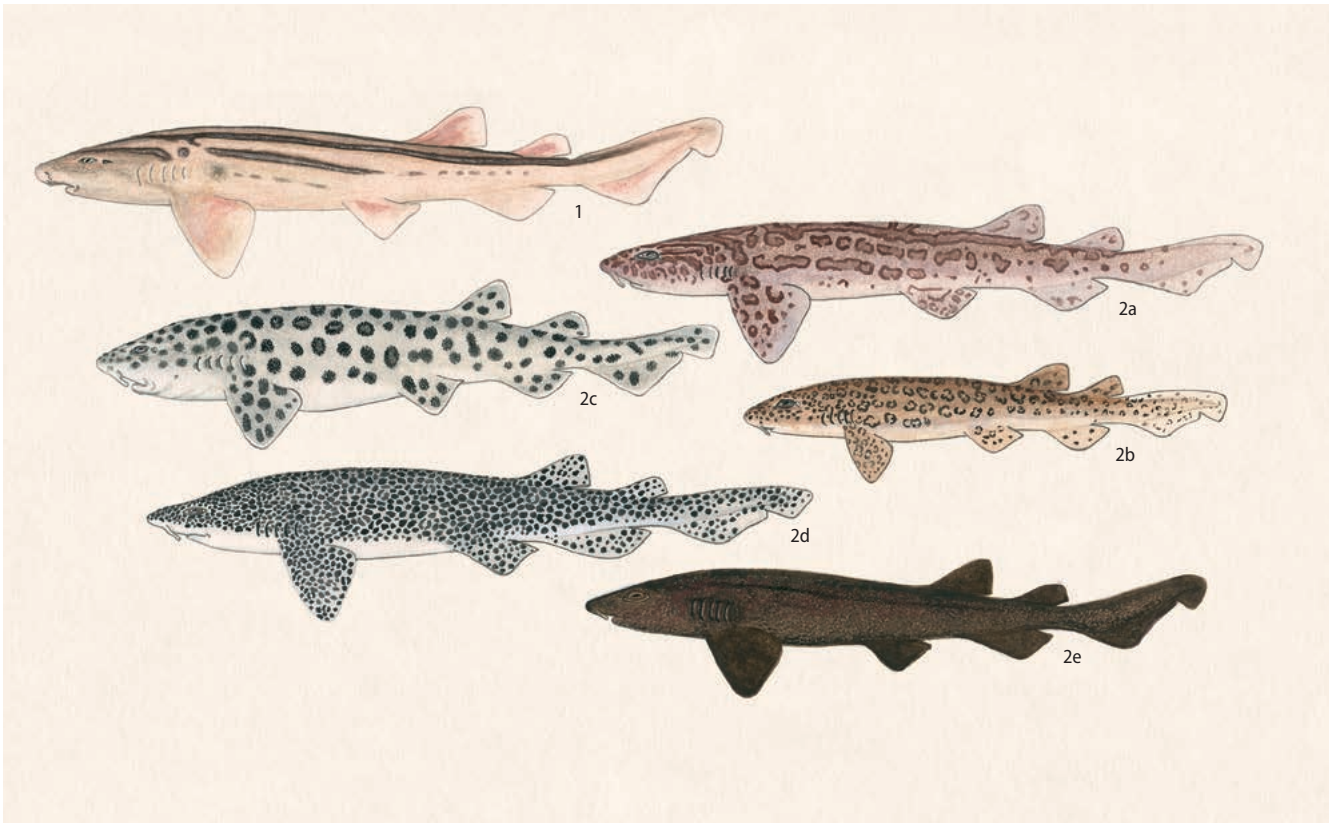


Scyliorhinus capensis, yellowspotted catshark, 34 cm TL (South Africa).



© J Escobar-Porras

Scyliorhinus comoroensis, Comoro catshark, ~50 cm TL composite (Comoros).

Family **SCYLIORHINIDAE**, Catsharks

1 *Poroderma africanum*, pyjama shark, 72 cm TL, mature female (South Africa).* **2** *Poroderma pantherinum*, leopard catshark, **(a)** 56 cm TL, **(b)** 34 cm TL immature male, **(c)** ~43 cm TL, marleyi form, female, **(d)** ~45 cm TL, salt & pepper form, female, **(e)** ~45 cm TL, black False Bay form, female (all South Africa).

Family **PROSCYLLIIDAE**, Finback catsharks

Eridacnis radcliffei, pygmy ribbontail catshark, ~17 cm TL (SW India).

KV Akhilesh © CMFRI

* Source: CFSA

Family **PROSCYLLIIDAE**, Finback catsharks

O. Alvheim © IMR

Eridacnis sinuans, African ribbontail catshark, 8–15 cm TL (S Mozambique).

Family **PSEUDOTRIAKIDAE**, False catsharks

© K-T Shao, ASIZ

Pseudotriakis microdon, false catshark (Taiwan).

Family **TRIAKIDAE**, Houndsharks



© Alvheim © IMR

Galeorhinus galeus, tope, 142 cm TL, mature male (South Africa).



© H-C Ho, NMMP-B

Mustelus manazo, starspotted smoothhound, 53 cm TL (Taiwan).



© Alvheim © IMR/ASCLIME

Mustelus cf. manazo, 65 cm TL (Saya de Malha Bank). #

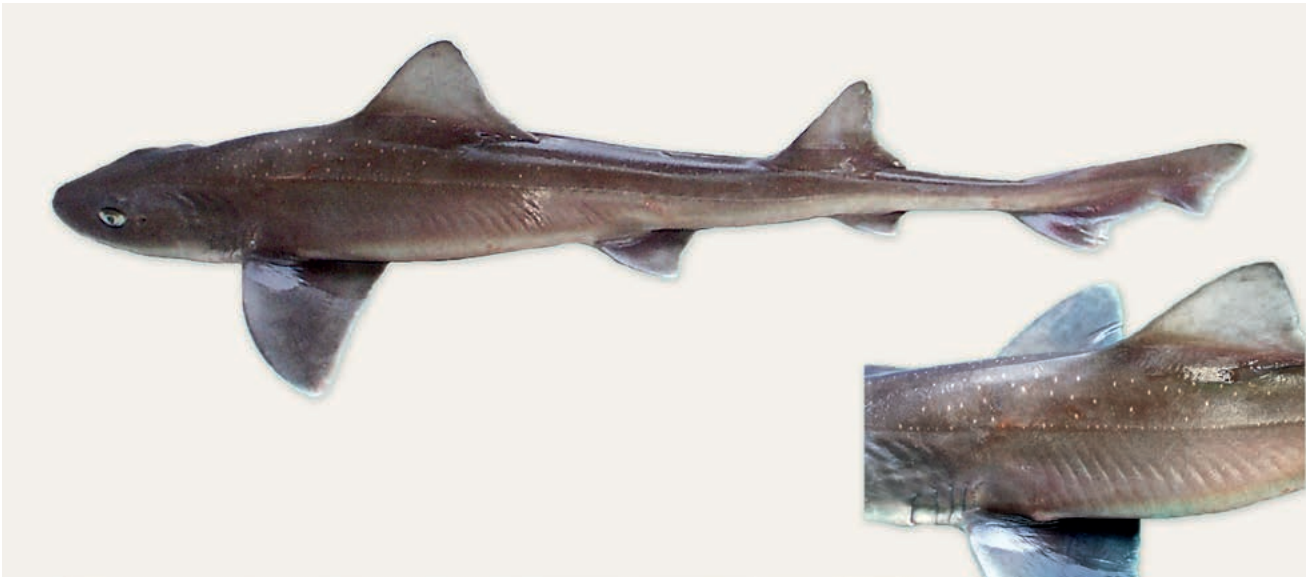


© Alvheim © IMR

Mustelus mosis, hardnose smoothhound, 53 cm TL, male (Mozambique).

= no species account

Family **TRIAKIDAE**, Houndsharks



© Alvheim © IMIR

Mustelus palumbes, whitespotted smoothhound, 73 cm TL (South Africa).



© ST Fennessy and (inset) B Mann, both ORI/SAAMBR

Scylliogaleus queckettii, flapnose houndshark, mouthparts inset (South Africa).

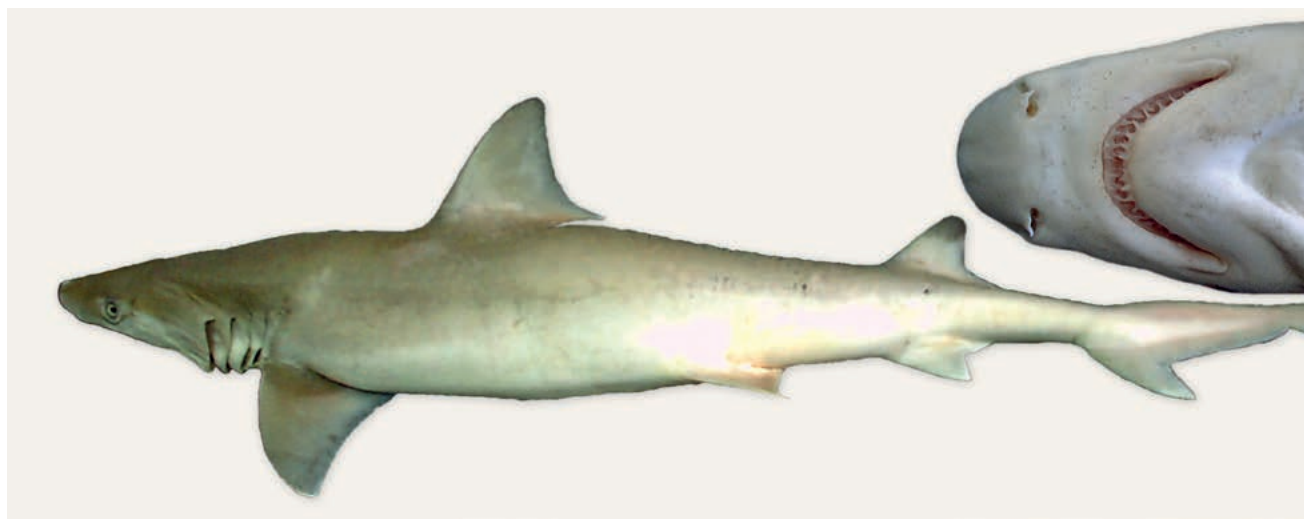


© C Cairne

Triakis megalopterus, spotted gullyshark (South Africa).

Family **TRIAKIDAE**, Houndsharks

- 1 *Galeorhinus galeus*, tope, 130 cm TL, mature male (South Africa).* 2 *Hypogaleus hyugaensis*, blacktip tope, 62 cm TL (Persian/Arabian Gulf).
 3 *Iago omanensis*, bigeye houndshark, ~40 cm TL (Red Sea). 4 *Mustelus mosis*, hardnose smoothhound, 76 cm TL, male (Red Sea). 5 *Mustelus mustelus*, smoothhound, 140 cm TL, mature female (South Africa).* 6 *Mustelus palumbes*, whitespotted smoothhound, 73 cm TL (South Africa).
 7 *Triakis megalopterus*, spotted gullyshark, 150 cm TL, mature female (South Africa).*

Family **HEMIGALEIDAE**, Weasel sharks

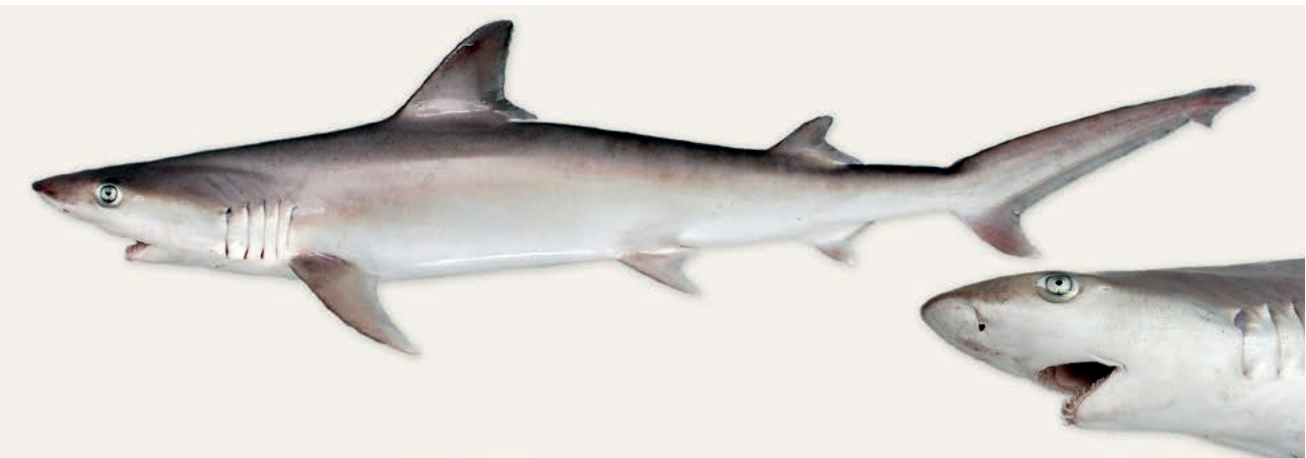
Chaenogaleus macrostoma, hooktooth shark (Oman).

* Source: CFSA

Family **HEMIGALEIDAE**, Weasel sharks

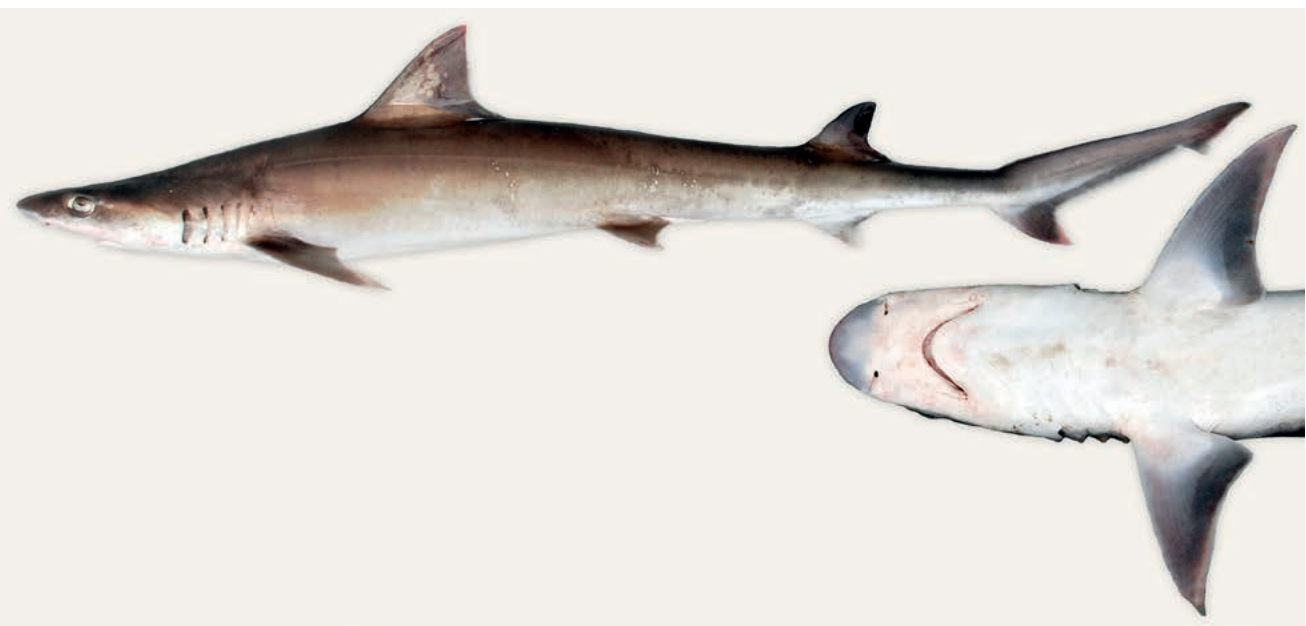
© J.E. Randall, Bishop Museum

Hemigaleus microstoma, sicklefin weasel shark, 111 cm TL (Indonesia).



© Alvhelm © IMR

Hemipristis elongata, snaggletooth shark, 72 cm TL (N Mozambique).



© Alvhelm © IMR

Paragaleus leucolomatus, whitetip weasel shark, 103 cm TL (S Mozambique).

Family **HEMIGALEIDAE**, Weasel sharks



© J.E. Randall, Bishop Museum

Paragaleus randalli, slender weasel shark, 62 cm TL, male (Persian/Arabian Gulf).

Family **CARCHARHINIDAE**, Requiem sharks



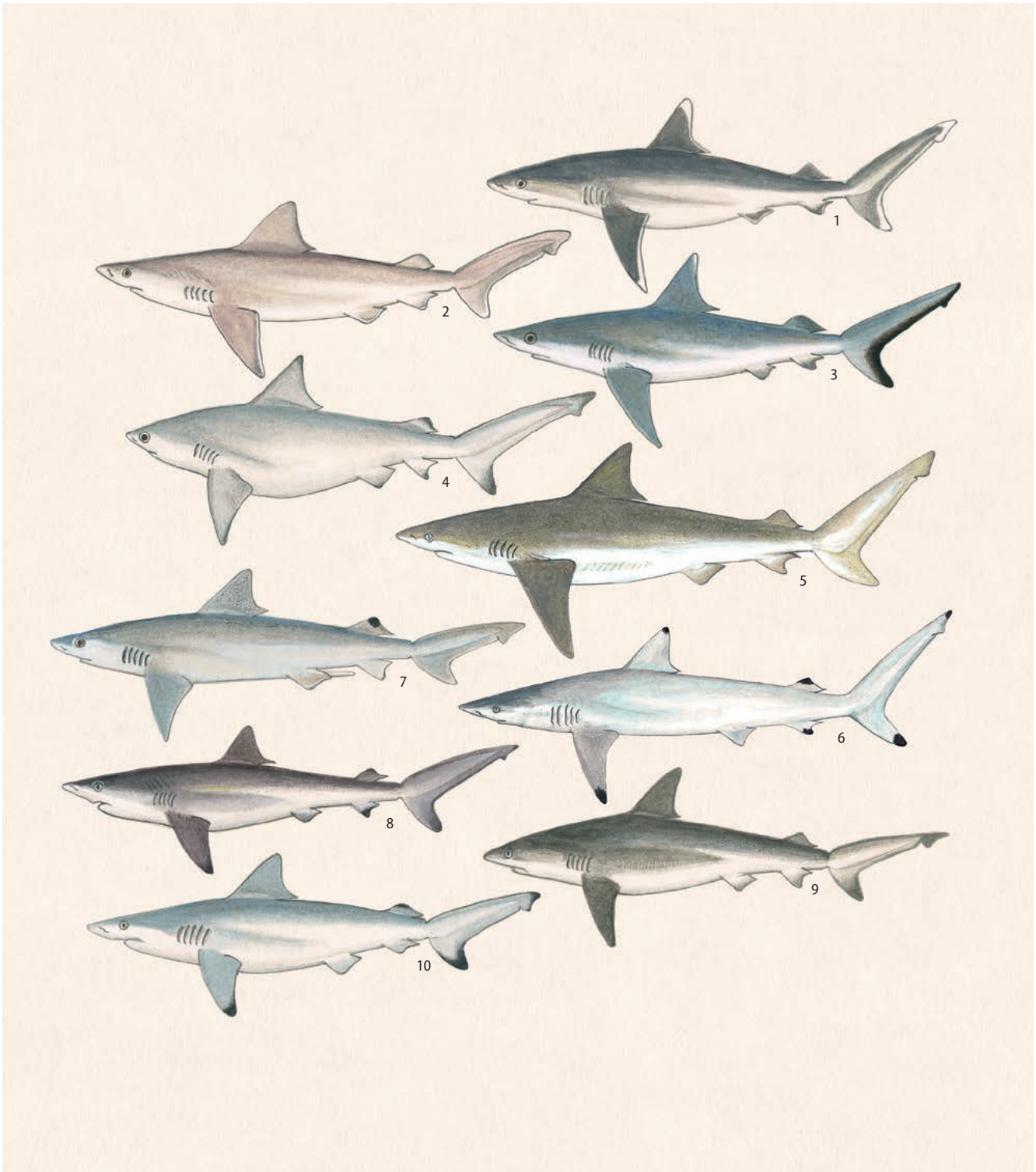
© P. Timm

Carcharhinus albimarginatus, silvertip shark (South Africa).



© H.B. Osmani

Carcharhinus amblyrhynchoides, graceful shark, 67 cm TL (Pakistan).

Family **CARCHARHINIDAE**, Requiem sharks

- 1 *Carcharhinus albimarginatus*, silvertip shark, 120 cm TL (New Guinea). 2 *Carcharhinus altimus*, bignose shark, ~75 cm TL (Atlantic Ocean). 3 *Carcharhinus amblyrhynchos*, grey reef shark, 76 cm TL (Saudi Arabia). 4 *Carcharhinus amboinensis*, pigeye shark, 80 cm TL (Persian/Arabian Gulf). 5 *Carcharhinus brachyurus*, bronze whaler, ~180 cm TL, juvenile (South Africa).* 6 *Carcharhinus brevipinna*, spinner shark, 180 cm TL, immature male (Japan).* 7 *Carcharhinus dussumieri*, whitecheek shark, 72 cm TL, male (Persian/Arabian Gulf). 8 *Carcharhinus falciformis*, silky shark, 110 cm TL (Taiwan). 9 *Carcharhinus galapagensis*, Galapagos shark, 94 cm TL (Azores). 10 *Carcharhinus hemiodon*, Pondicherry shark, 50 cm TL (India).

* Source: CFSA

Family **CARCHARHINIDAE**, Requiem sharks



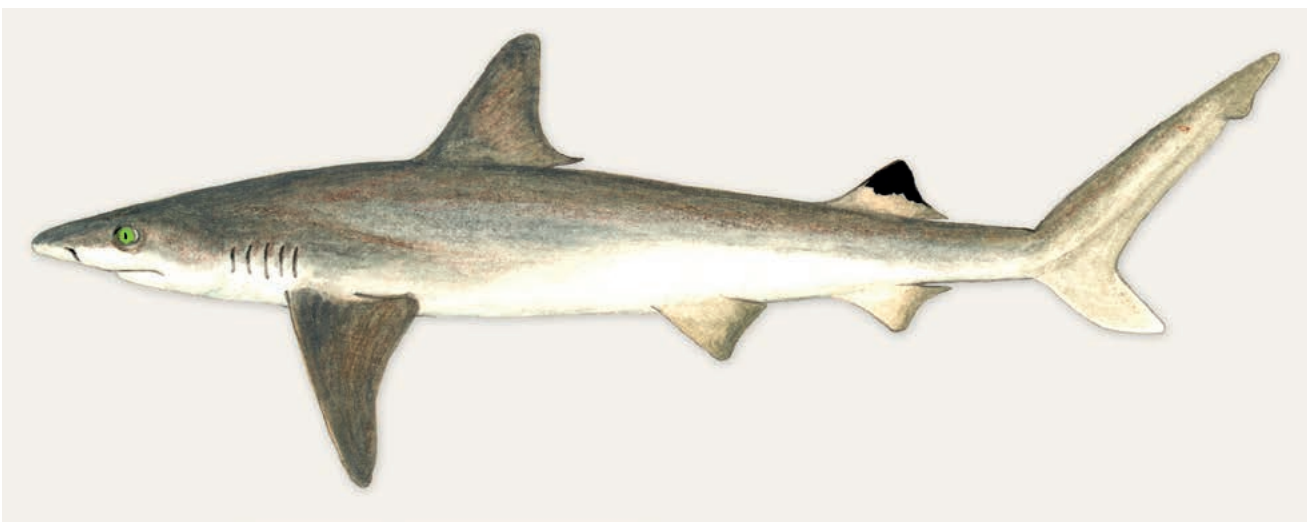
O Alvhheim © IMR

Carcharhinus amblyrhynchos, grey reef shark, 68 cm TL (Mozambique).

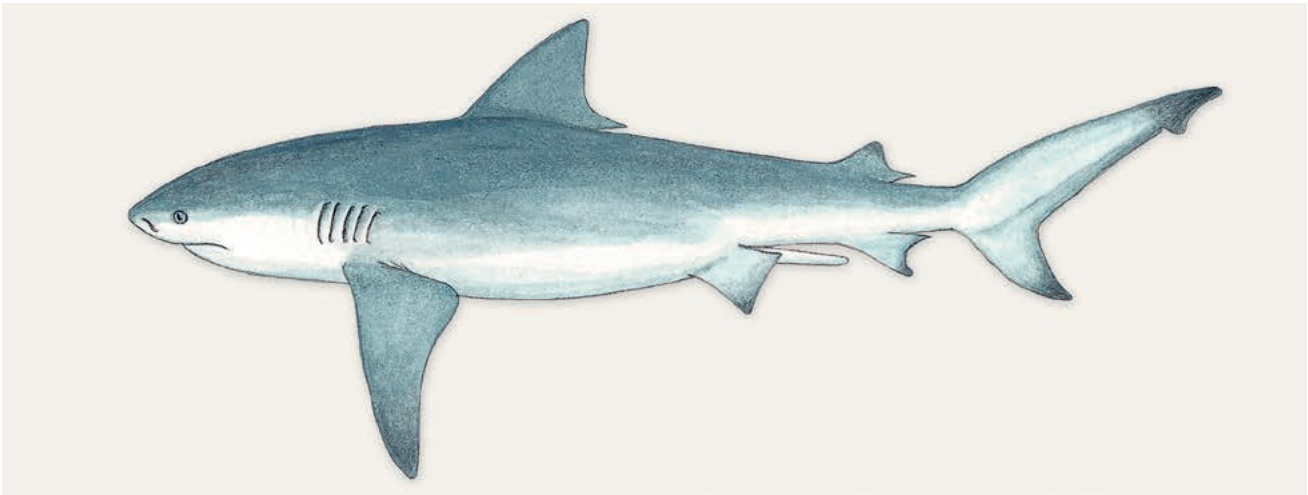


O Alvhheim © IMR

Carcharhinus humani, Human's whaler shark, 77 cm TL (Mozambique).

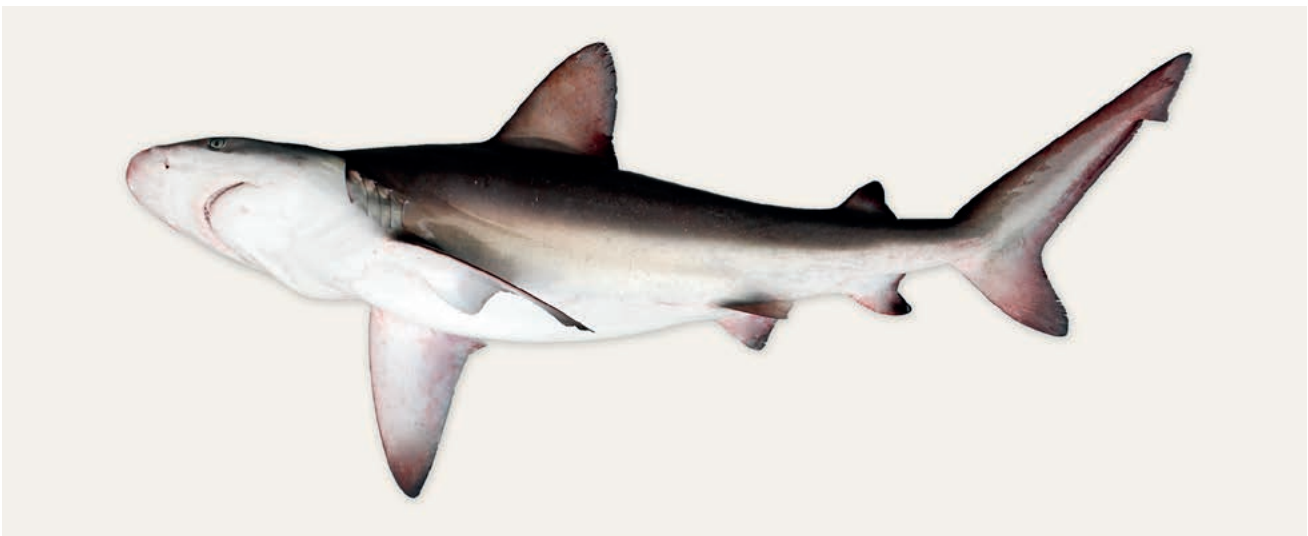


Carcharhinus humani, Human's whaler shark, 91 cm TL (South Africa).

Family **CARCHARHINIDAE**, Requiem sharks

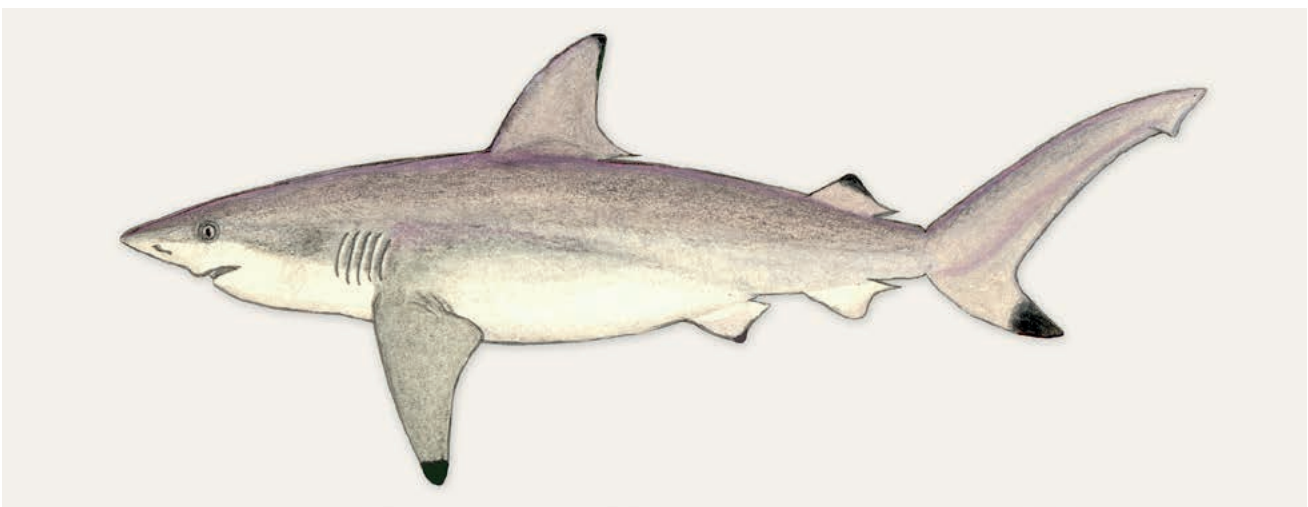
Source: CFSA

Carcharhinus leucas, bull shark, 2.4 m TL, mature male (Australia).



O. Alvheim. © IMR

Carcharhinus leucas, bull shark, 155 cm TL (Mozambique).



Carcharhinus limbatus, blacktip shark, 70 cm TL (South Africa).

Family **CARCHARHINIDAE**, Requiem sharks



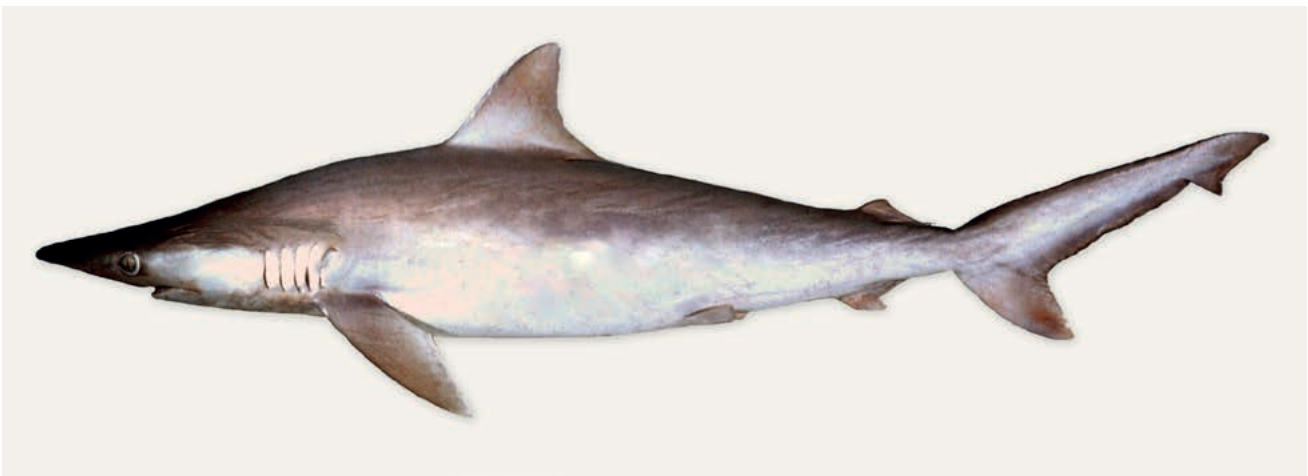
© Y Kratochvil

Carcharhinus limbatus, blacktip shark, with *Echeneis naucrates*, shark remoras (South Africa).



© P Louisy

Carcharhinus longimanus, oceanic whitetip shark (Red Sea).



PC Heemstra © NRF-SAIAB

Carcharhinus macloti, hardnose shark, 79 cm TL, female (Kenya).

Family **CARCHARHINIDAE**, Requiem sharks

© JE Randall, Bishop Museum

Carcharhinus melanopterus, blacktip reef shark (Hawaii).



Source: CFSA

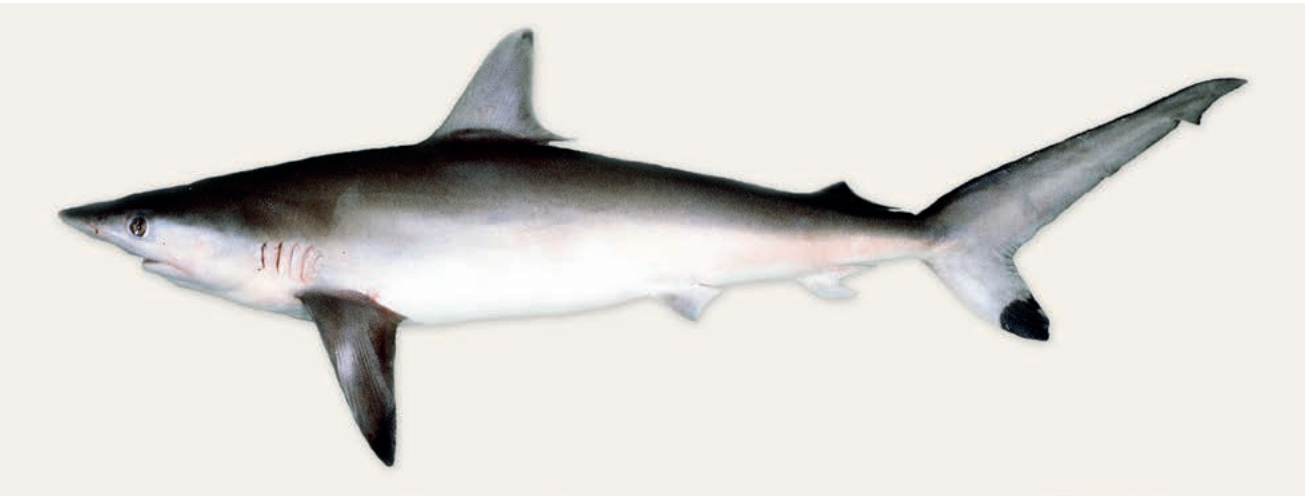
Carcharhinus obscurus, dusky shark, ~2 m TL, juvenile (South Africa).



© JE Randall, Bishop Museum

Carcharhinus plumbeus, sandbar shark (Hawaii).

Family **CARCHARHINIDAE**, Requiem sharks



© J.E. Randall, Bishop Museum

Carcharhinus sorrah, spottail shark, 108 cm TL (Bahrain).



O. Alvhheim © IMR

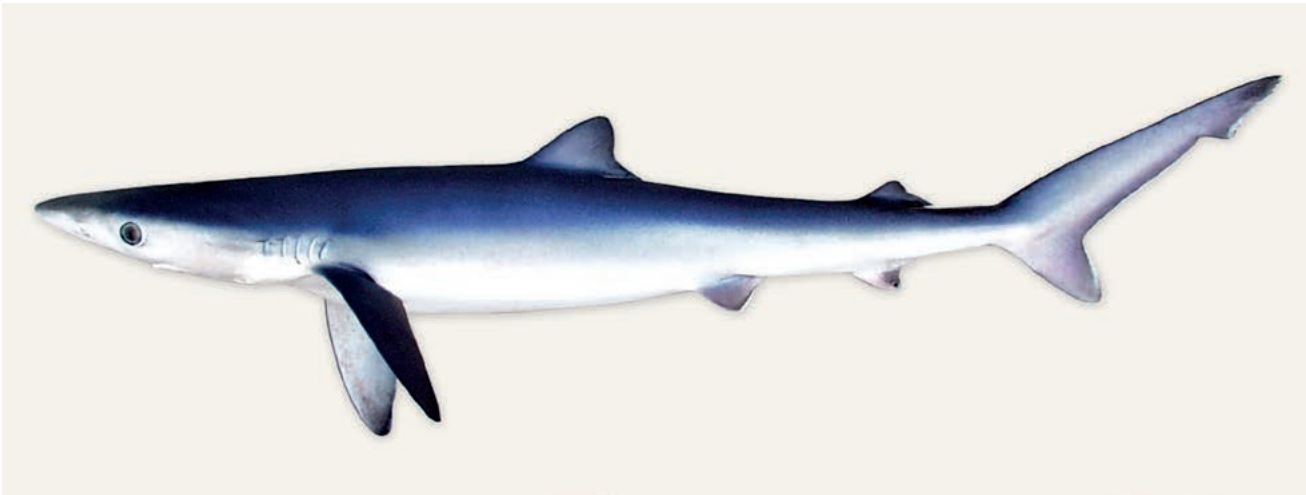
Loxodon macrorhinus, sliteye shark, 90 cm TL (Mozambique).



© J.E. Randall, Bishop Museum

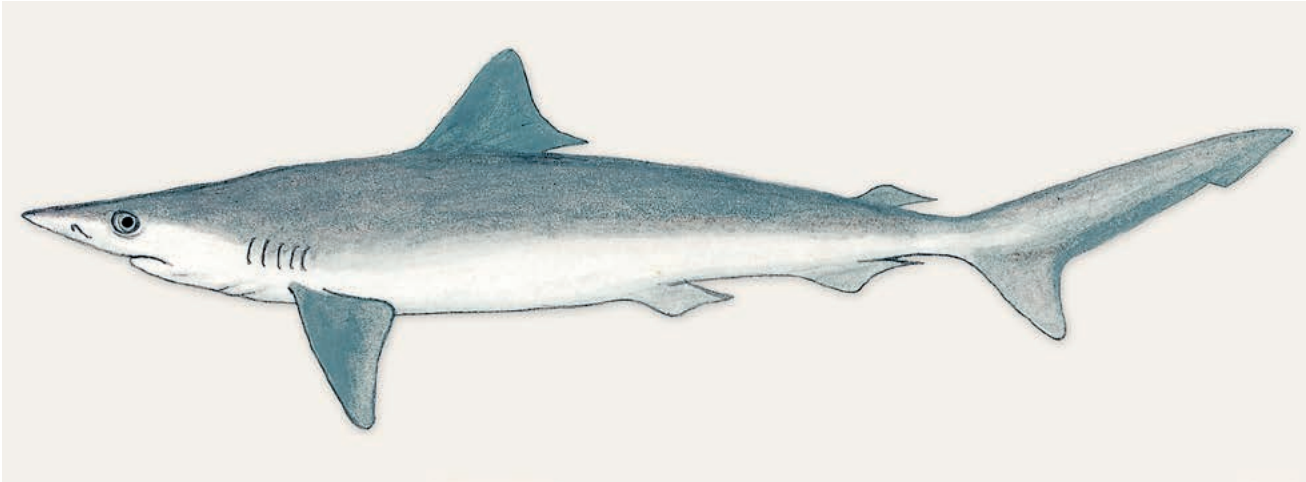
Negaprion acutidens, sharptooth lemon shark, 178 cm TL, male (Fanning Is.).

Family **CARCHARHINIDAE**, Requiem sharks



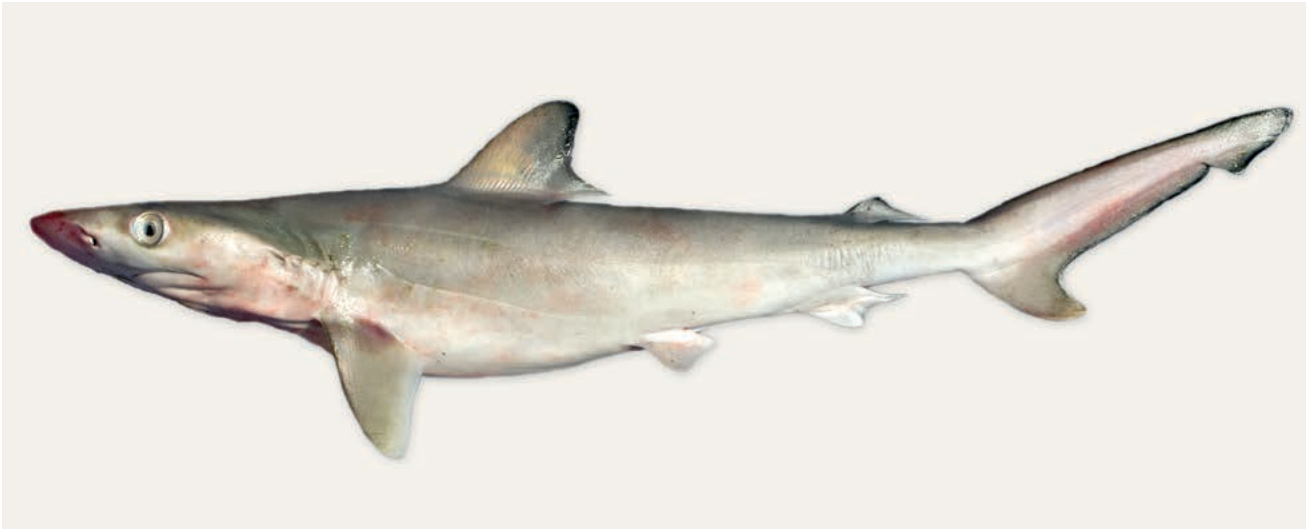
O Alvhheim © IMR

Prionace glauca, blue shark, 68 cm TL (Namibia).



Source: CFSA

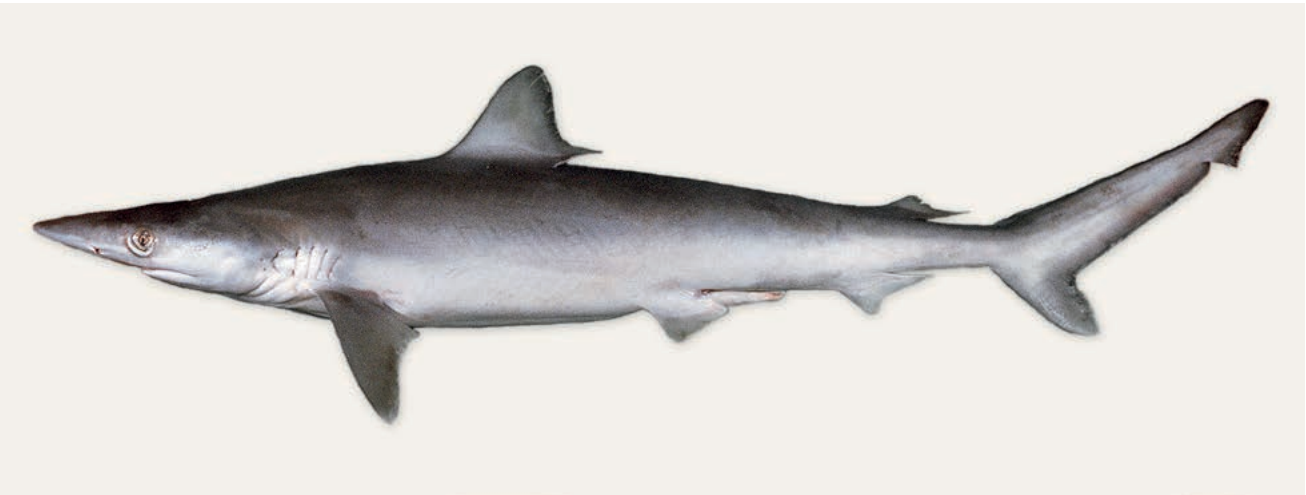
Rhizoprionodon acutus, milk shark, 67 cm TL, female (Persian/Arabian Gulf).



© SV Bogorodsky

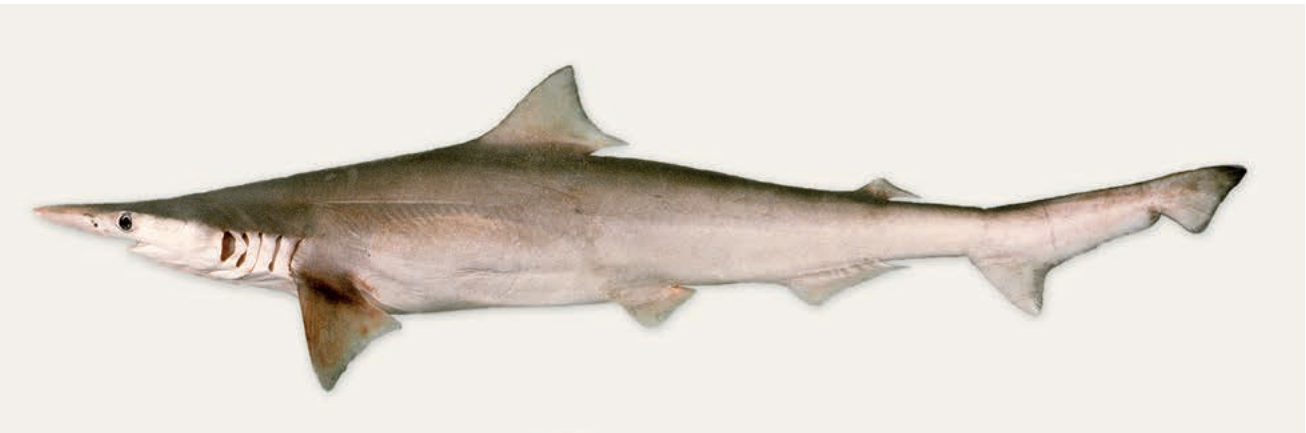
Rhizoprionodon acutus, milk shark, 33 cm TL, male (Red Sea).

Family **CARCHARHINIDAE**, Requiem sharks



© J.E. Randall, Bishop Museum

Rhizoprionodon oligoinx, grey sharpnose shark, 48 cm TL (Oman).



© J.E. Randall, Bishop Museum

Scoliodon laticaudus, spadenose shark, 58 cm TL (SW India).



© S.V. Bogorodsky

Triaenodon obesus, whitetip reef shark (Red Sea).

Family **GALEOCERDONIDAE**, Tiger shark



Source: CFSA

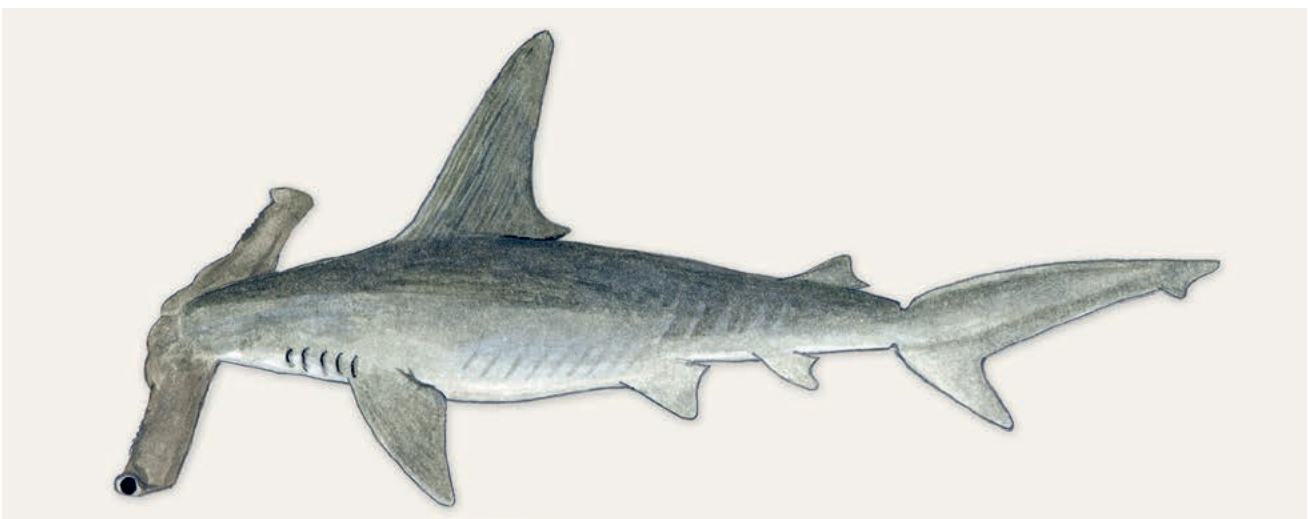
Galeocerdo cuvier, tiger shark, 82 cm TL, juvenile (South Africa); 3 m TL, mature female (Marshall Is.).



© DR King

Galeocerdo cuvier, tiger shark (South Africa).

Family **SPHYRNIDAE**, Hammerhead sharks



Eusphyr a blochii, winghead shark, 180 cm TL (N Australia).

Family **SPHYRNIDAE**, Hammerhead sharks



© Alveim © IMR

Sphyrna lewini, scalloped hammerhead, 71 cm TL (Seychelles).



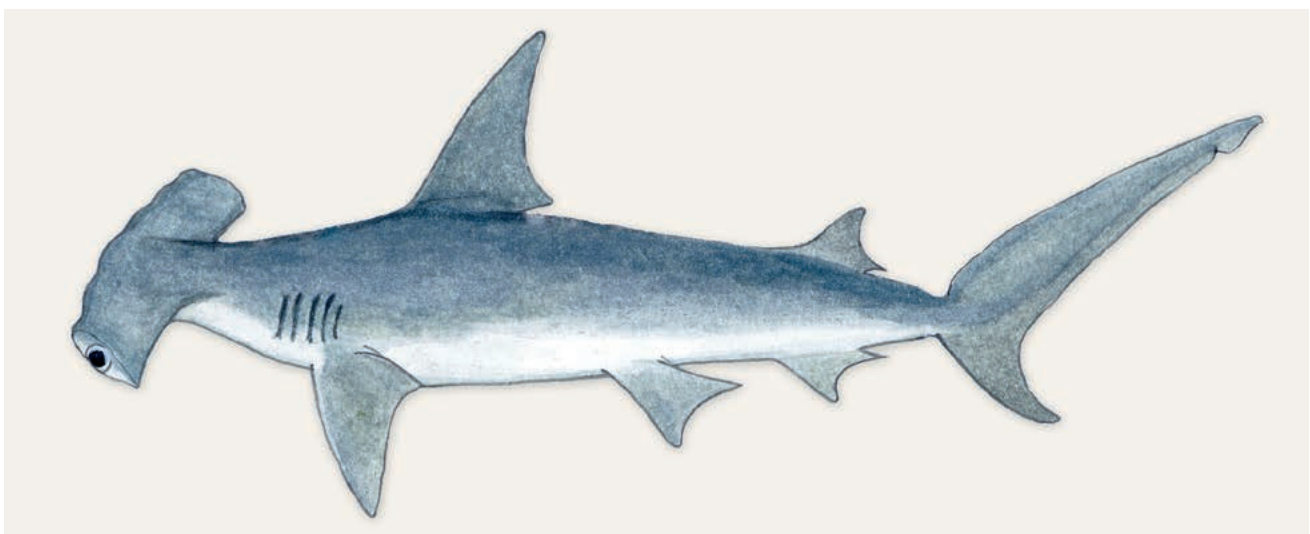
© JE Randall, Bishop Museum

Sphyrna lewini, scalloped hammerhead, aquarium (Hawaii).



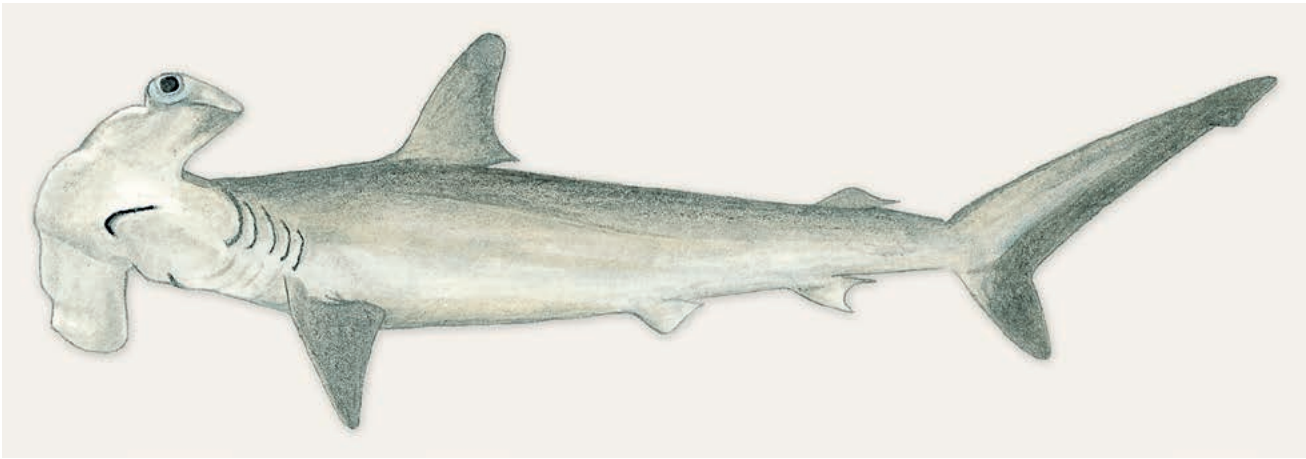
© A Kok, CC BY-SA 4.0

Sphyrna mokarran, great hammerhead (Bahamas).



Sphyrna mokarran, great hammerhead, 240 cm TL (Japan).

Family **SPHYRNIDAE**, Hammerhead sharks



Source: CFSA

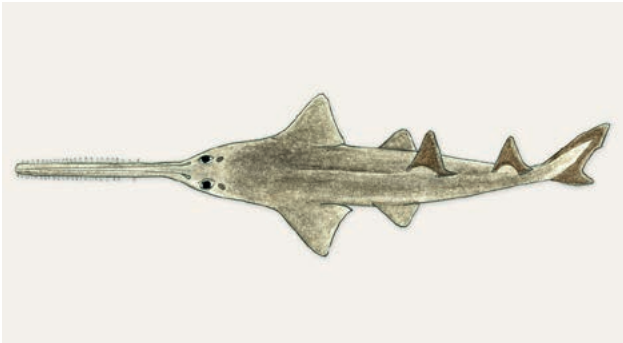
Sphyrna zygaena, smooth hammerhead, ~70 cm TL, immature female (South Africa).



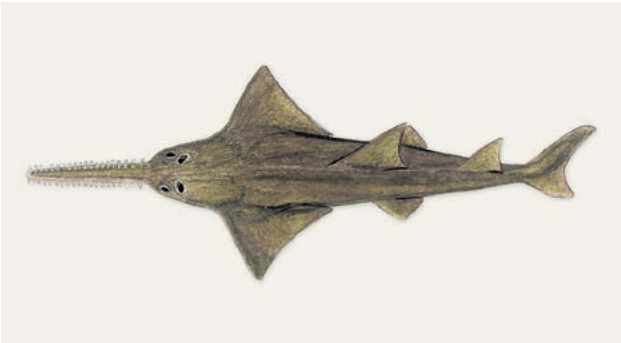
© A Murch

Sphyrna zygaena, smooth hammerhead (Mexico, E Pacific).

Family **PRISTIDAE**, Sawfishes



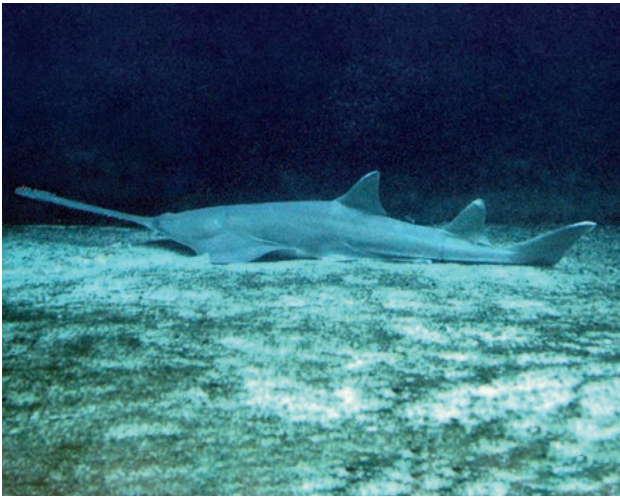
Anoxypristis cuspidata, narrow sawfish, ~80 cm TL (WIO).



Source: CFSA

Pristis pristis, largetooth sawfish, 3.6 m TL (South Africa).

Family **PRISTIDAE**, Sawfishes



PC Heemstra © NRF-SAIAB

Pristis zijsron, green sawfish, adult male (South Africa).



© DR King

Pristis zijsron, green sawfish, 3.9 m TL, adult female (South Africa).



© JE Randall, Bishop Museum

Pristis zijsron, green sawfish, 91 cm TL, dorsal view (Bahrain).

Family **TORPEDINIDAE**, Torpedo rays



O AlWheim © IMR

Tetronarce cowleyi, Cowley's torpedo ray, 36 cm TL (Namibia).

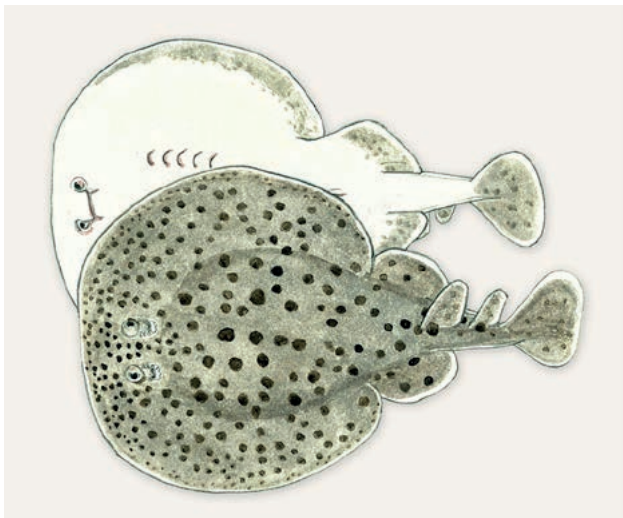


PC Heemstra © NRF-SAIAB

Tetronarce sp., 32 cm DW (S Mozambique). #

= no species account

Family **TORPEDINIDAE**, Torpedo rays



Torpedo fuscomaculata, blackspotted torpedo, 7 cm DW, 10 cm TL (South Africa).



Torpedo fuscomaculata, blackspotted torpedo, 28 cm TL (South Africa).

PC Heemstra © NRF-SAIAB



Torpedo panthera, leopard torpedo, 16 cm TL (Oman).

© JE Randall, Bishop Museum



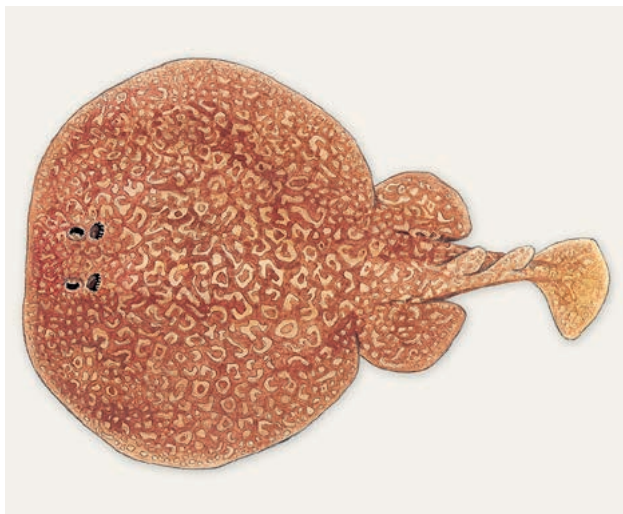
Torpedo panthera, leopard torpedo (Red Sea).

© SV Bogorodsky



Torpedo sinuspersici, marbled torpedo, 12 cm DW (SW India).

KV Akhilesh © CMFRI



Torpedo sinuspersici, marbled torpedo, 19 cm DW (S Mozambique).

Source: CFA

Family **TORPEDINIDAE**, Torpedo rays



PC Heemstra © NRF-SAIAB

Torpedo sp., 37 cm TL (Comoros). #



© M Fraser

Torpedo sp. (Mozambique). #



© JE Randall, Bishop Museum

Torpedo suessii, Red Sea torpedo, 33 cm TL (Red Sea).

Family **NARCINIDAE**, Numbfishes



KV Akhlesh © CMFRI

Benthobatis moresbyi, dark blindray, 32 cm TL, 11 cm DW (SW India). #

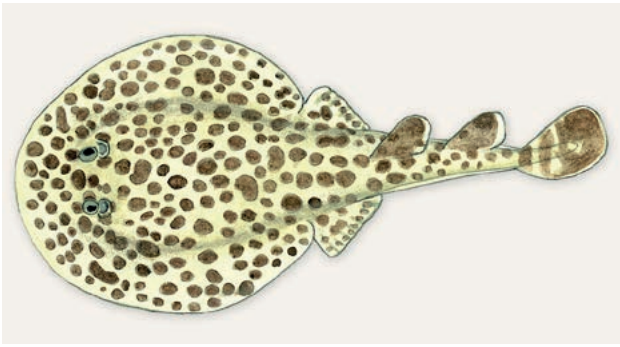


P-L Lin © ASZ

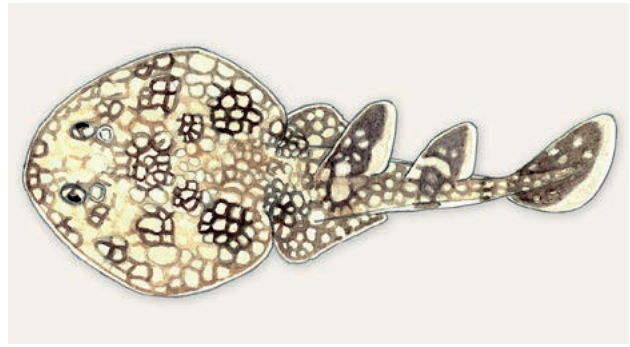
Narcine lingula, Chinese numbfish, ~30 cm TL (Taiwan).

= no species account

Family **NARCINIDAE**, Numbfishes



Narcine lingula, Chinese numbfish (W India).



Narcine oculifera, big-eye numbfish, 24 cm TL (Oman).



Narcine rierai, Mozambique numbfish, 11 cm DW (S Mozambique).

© Alvhelm © IMR



Narcine timlei, brown numbfish, 7 cm DW, 15 cm TL (India).

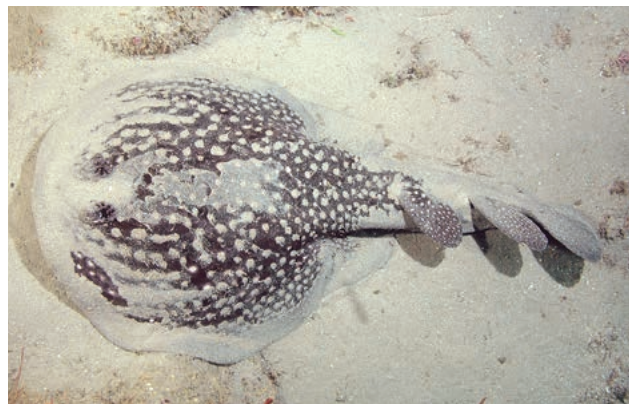
© P Devarapalli, MSNDC

Family **NARKIDAE**, Sleeper rays



Electrolux addisoni, ornate sleeper ray (South Africa).

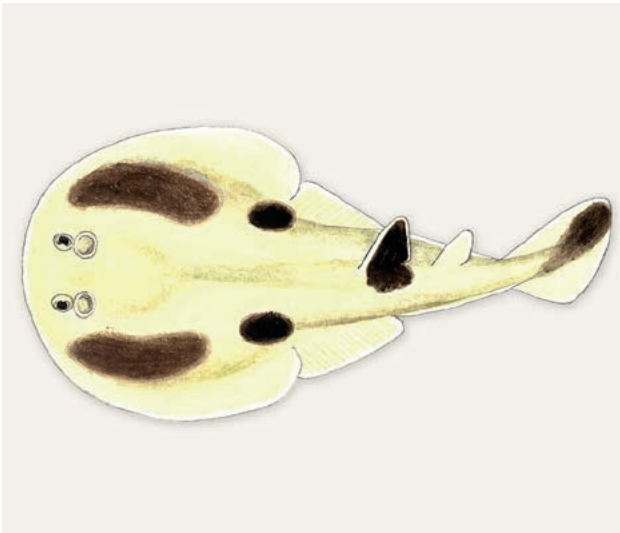
© AS Pearson



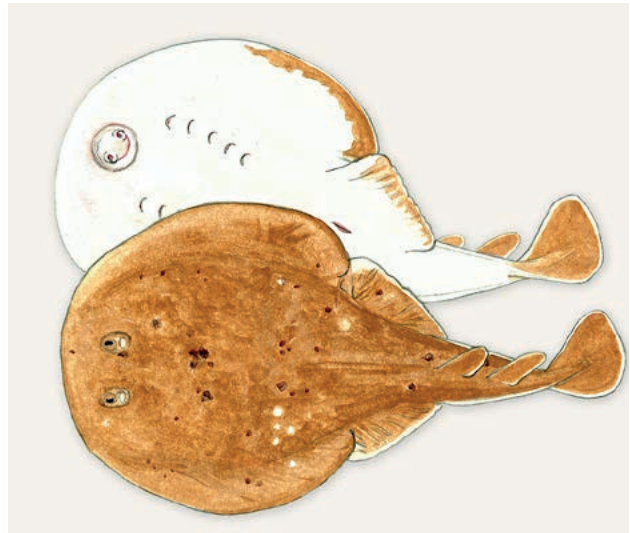
Electrolux addisoni, ornate sleeper ray (South Africa).

© V Fraser

Family **NARKIDAE**, Sleeper rays



Heteronarce bentuviai, Eilat electric ray, 18 cm TL, male (Gulf of Aqaba).



Heteronarce garmani, Natal electric ray, 27 cm TL, 16 cm DW, female (Mozambique).



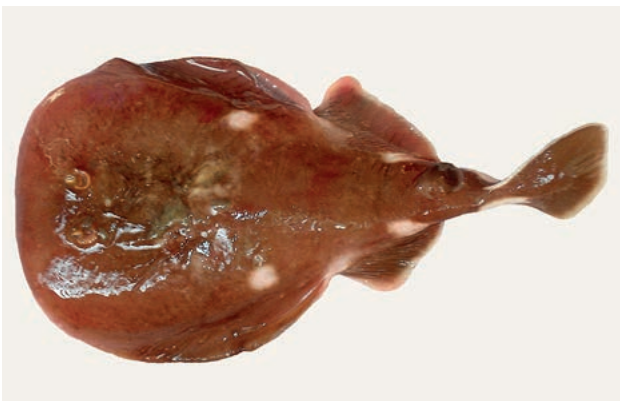
O Alvhheim © IMR

Narke capensis, Cape sleeper ray, 16 cm TL (South Africa).



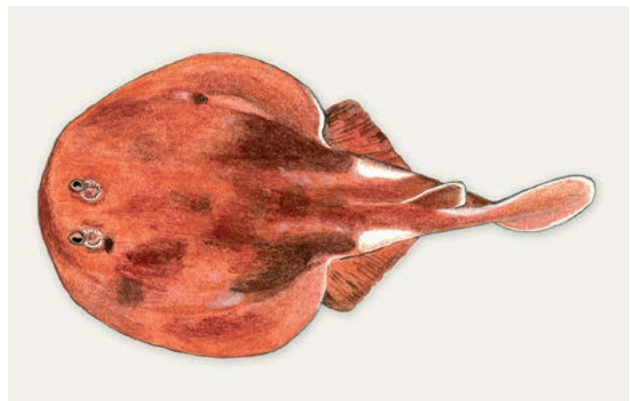
PC Heemstra © NRF-SAIAB

Narke capensis, Cape sleeper ray, 22 cm TL, 13 cm DW (South Africa).



© P Devarapalli, MSNDC

Narke dipterygia, spottail sleeper ray, 14 cm TL, 6 cm DW (India).



Narke dipterygia, spottail sleeper ray, 21 cm TL (Oman).

Family RHINIDAE, Shark ray, wedgefishes



KK Bineesh © CMFRI

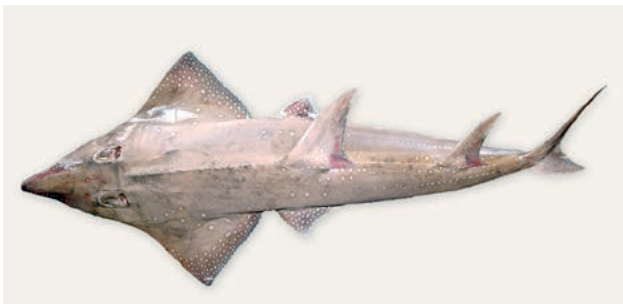
Rhina ancylostomus, shark ray (SW India).



Rhina ancylostomus, shark ray, 100+ cm TL, adult (South Africa).



Rhynchobatus australiae, bottlenose wedgefish, 115 cm TL (Qatar).



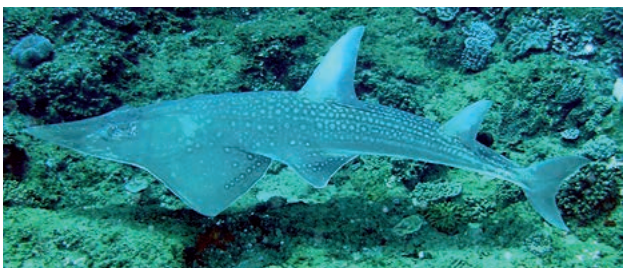
Rhynchobatus cf. australiae, ~90 cm TL (SW India). #

KV Akhilesh © CMFRI



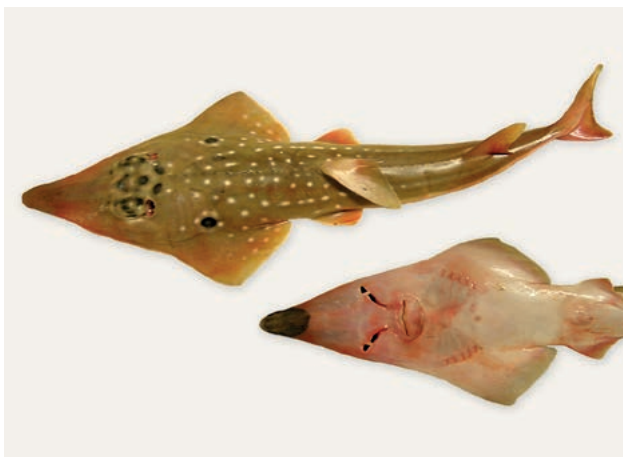
© SV Bogorodsky

Rhynchobatus djiddensis, whitespotted wedgefish, 46 cm TL (Red Sea).



Rhynchobatus djiddensis, whitespotted wedgefish, ~150 cm TL (South Africa).

© DA Polack



AD Connell © NRF-SAVAB

Rhynchobatus djiddensis, whitespotted wedgefish, 50 cm TL (South Africa).



O Alvineim © IMR

Rhynchobatus laevis, smoothnose wedgefish, 69 cm TL (Mozambique).

= no species account

Family **RHINOBATIDAE**, Guitarfishes



E Heemstra © NRF-SAIAB

Acroteriobatus andysabini, Malagasy blue-spotted guitarfish, ~57 cm SL, juvenile male, holotype (Madagascar). #



© Q Rouhani, RU-DIFS

Acroteriobatus annulatus, lesser guitarfish, 130 cm TL, and 4-cm-TL embryos, typical form (South Africa).



© B Mamm, ORI/SAAMBR

Acroteriobatus annulatus, lesser guitarfish, ~90 cm TL, KwaZulu-Natal form (South Africa).



© H van der Bank, UJ

Acroteriobatus blochii, bluntnose guitarfish, 27 cm SL, 30 cm TL, juvenile (Namibia).



© DR King

Acroteriobatus leucospilus, greyspotted guitarfish (South Africa).

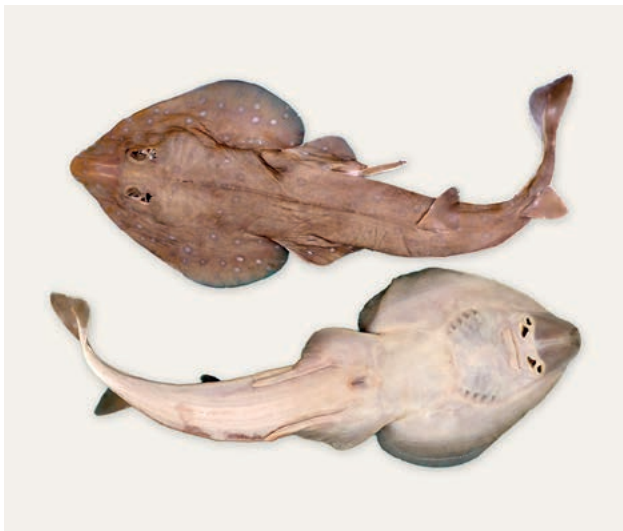


© R Palmer © NRF-SAIAB

Acroteriobatus ocellatus, maculate guitarfish (South Africa).

= no species account

Family **RHINOBATIDAE**, Guitarfishes



© PN Psomadakis, FAO

Acroteriobatus salalah, Salalah guitarfish, 63 cm TL (Pakistan).



© MFW Stehmann, Ichthys Lab. Hamburg

Acroteriobatus stehmanni, Socotra blue-spotted guitarfish, 59 cm TL, adult female, paratype (Socotra). #



© JE Randall, Bishop Museum

Acroteriobatus variegatus, stripenose guitarfish, 58 cm TL (SW India).



© Alveim, © IMR

Rhinobatos austini, Austin's guitarfish, 111 cm TL (S Mozambique).



© ST Fennessy, OR/SAAMBR

Rhinobatos holcorhynchus, slender guitarfish, 42 cm TL (South Africa).



© PRLast, CSIRO

Rhinobatos nudidorsalis, bareback shovelnose ray, 50 cm TL (Saya de Malha Bank).

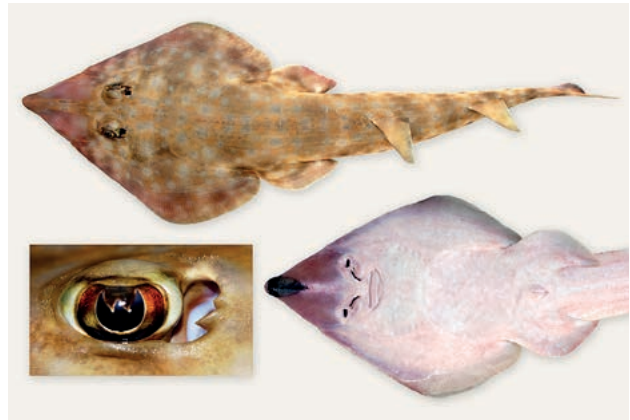
= no species account

Family **RHINOBATIDAE**, Guitarfishes



© JE Randall, Bishop Museum

Rhinobatos punctifer, spotted guitarfish, 65 cm TL (Gulf of Aqaba).



© Alvheim © IMR

Rhinobatos sp., 89 cm TL (N Mozambique). #

Family **GLAUCOSTEGIDAE**, Giant guitarfishes



© B Séret

Glaucostegus cemiculus, blackchin guitarfish.



© JE Randall, Bishop Museum

Glaucostegus granulatus, sharpnose guitarfish, 39 cm TL (Kuwait).



© SV Bogorodsky

Glaucostegus halavi, Halavi guitarfish (Red Sea).



© JE Randall, Bishop Museum

Glaucostegus halavi, Halavi guitarfish, 84 cm TL (Red Sea).



KV Akhlesh © CMFRI

Glaucostegus obtusus, widenose guitarfish, 69 cm TL (SW India).



© JE Randall, Bishop Museum

Glaucostegus thouin, clubnose guitarfish, 39 cm TL (Indonesia).

= no species account

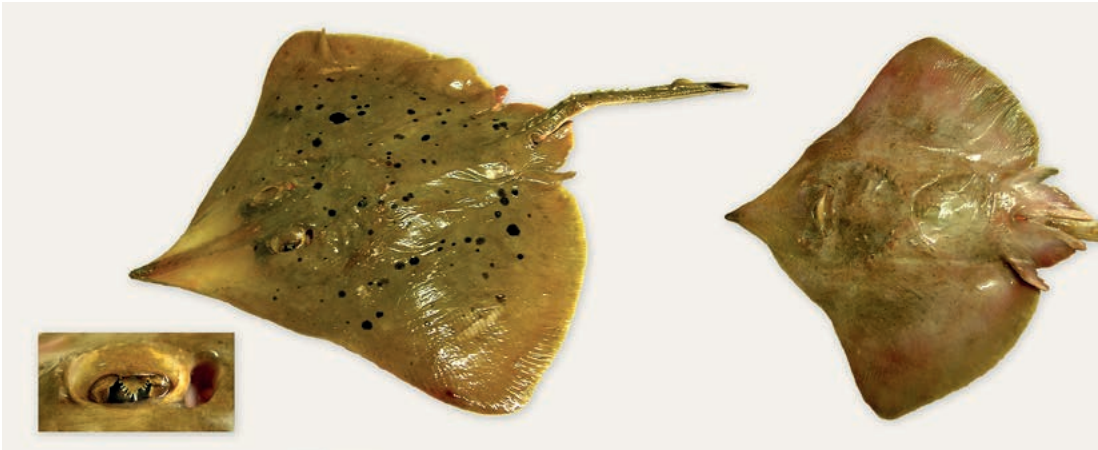
Family **GLAUCOSTEGIDAE**, Giant guitarfishes



© T Krajangdara & M Sumontha, AFDEC

Glaucostegus typus, giant shovelnose ray (Thailand).

Family **RAJIDAE**, Hardnose skates



AD Connell © NRF-SAAB

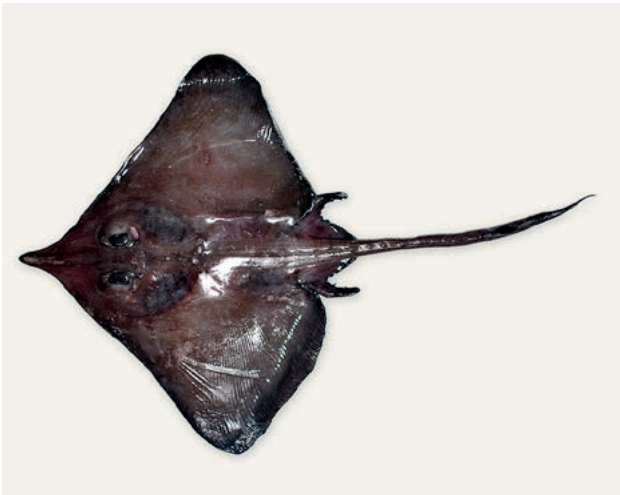
Dipturus campbelli, blackspot skate, 40 cm TL, 32 cm DW (South Africa).



O Alvhheim © IMR

Dipturus doutrei, javelin skate, 42 cm DW (Namibia).

Family **RAJIDAE**, Hardnose skates



KV Akhilesh © CMFRI

Dipturus johannisdavisi, Travancore skate, 25 cm TL, 18 cm DW (SW India).



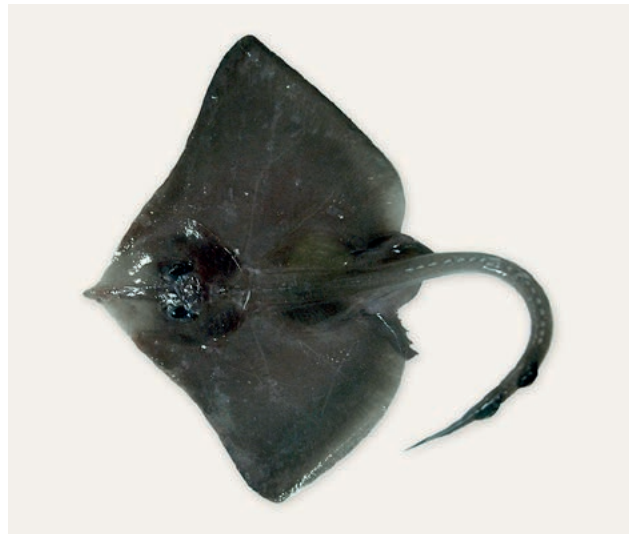
O Alvhheim © IMR

Dipturus pullopunctatus, slime skate, 59 cm TL (South Africa).



© DA Ebert, MLML

Dipturus pullopunctatus, slime skate, 45 cm TL, juvenile (South Africa).



© P Bouchet, MNHN

Dipturus springeri, roughbelly skate, ~45 cm TL (Mozambique).



AD Connell © NRF-SAAB

Dipturus springeri, roughbelly skate, 27 cm TL, ~21 cm DW, neonate (South Africa).

Family **RAJIDAE**, Hardnose skates



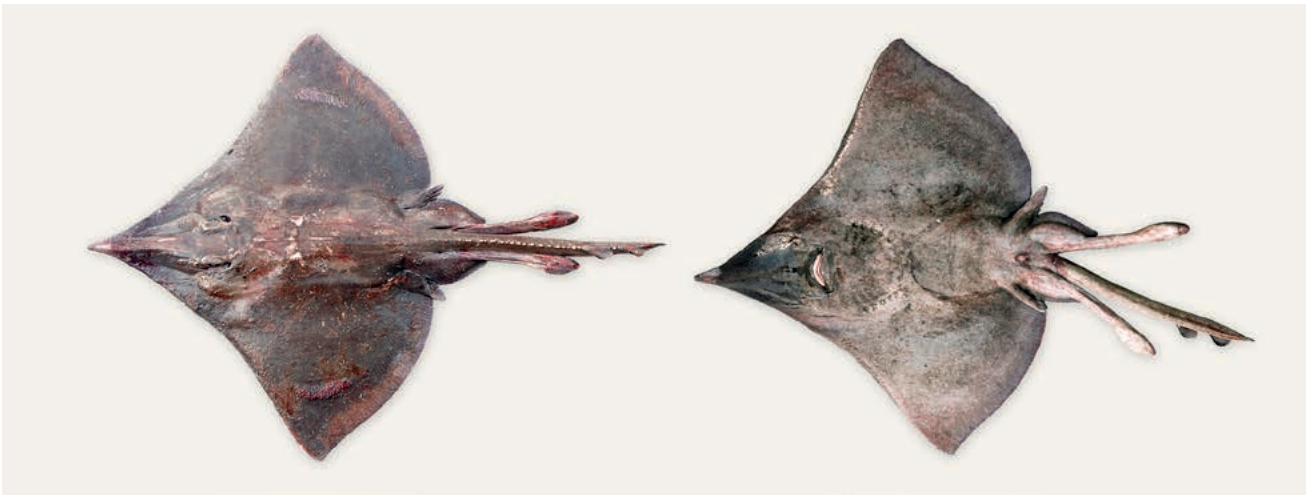
© DA Ebert, MLML

Dipturus springeri, roughbelly skate, juvenile (South Africa).



PC Heemstra © NRF-SAAB

Leucoraja elaineae, 33 cm TL, female holotype (Kenya). #



O Alvhelm © IMR

Dipturus stenorhynchus, prownose skate, 105 cm TL (Mozambique).

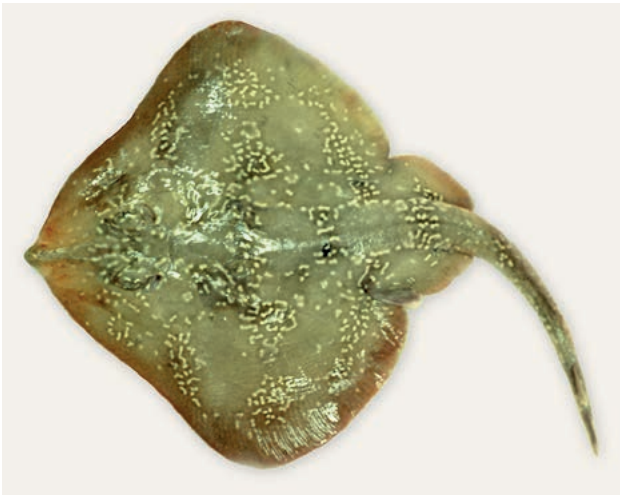


© DA Ebert, MLML

Leucoraja compagnoï, tigertail skate (South Africa).

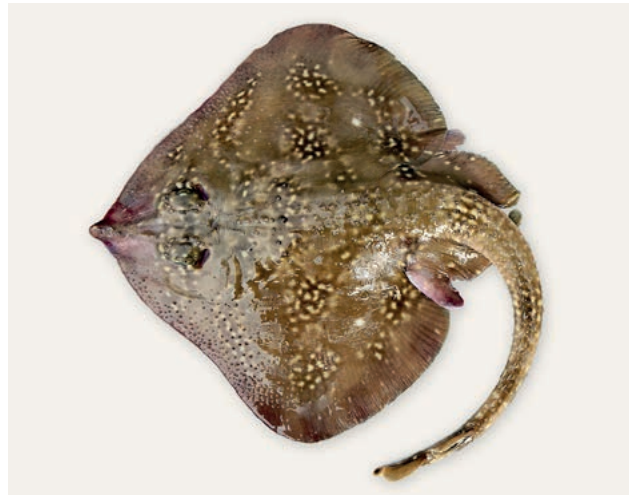
= no species account

Family **RAJIDAE**, Hardnose skates



PC Heemstra © NRF-SAIAB

Leucoraja wallacei, yellowspotted skate, 41 cm DW (South Africa).



© RW Leslie

Leucoraja wallacei, yellowspotted skate, male (South Africa).



O Alvhelm © IMR

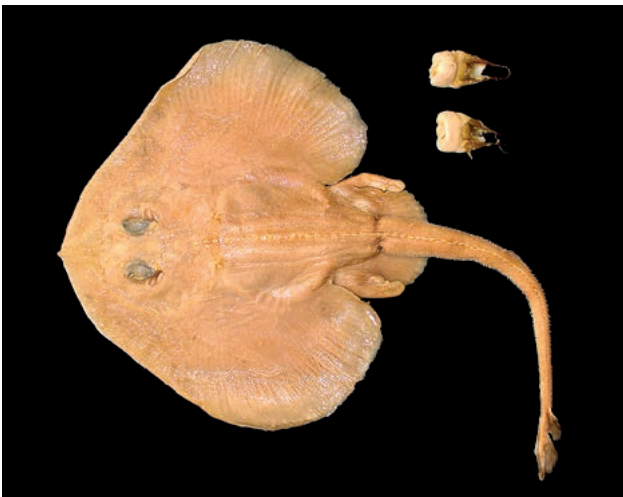
Neoraja stehmanni, South African pygmy skate, 30 cm TL, 18 cm DW (South Africa).



O Alvhelm © IMR

Okamejei heemstrai, East African skate, 22 cm DW, eye detail inset (Mozambique).

Family **RAJIDAE**, Hardnose skates



© DA Ebert, MLML

Neoraja stehmanni, South African pygmy skate, 35 cm TL (South Africa).



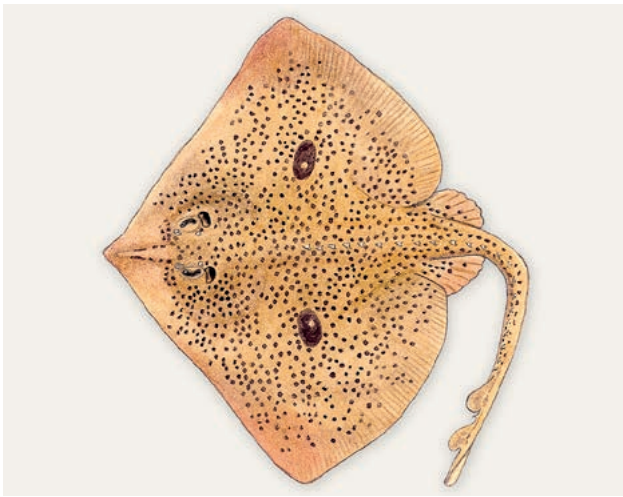
KK Bineesh © CMFRI

Orbiraja powelli, Indian ring skate, 39 cm TL, 23 cm DW (SW India).



O Alvhelm © IMR

Raja ocellifera, twineye skate, 43 cm TL (South Africa).



Source: CFSA

Raja straeleni, biscuit skate, 45 cm DW, female (South Africa).



© C Caine

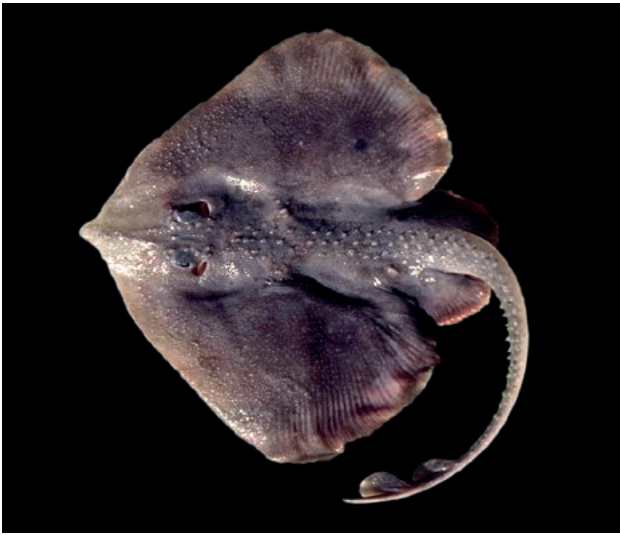
Raja straeleni, biscuit skate, 53 cm DW (South Africa).



© C Caine

Raja straeleni, biscuit skate, 53 cm DW, ventral view (South Africa).

Family **RAJIDAE**, Hardnose skates



ME Anderson © NRF-SAIAB

Rajella barnardi, bigthorn skate (South Africa).



ME Anderson © NRF-SAIAB

Rajella caudaspinosa, munchkin skate (South Africa).



AD Connell © NRF-SAIAB

Rajella dissimilis, ghost skate, 35 cm DW, male, ventral view (South Africa). #



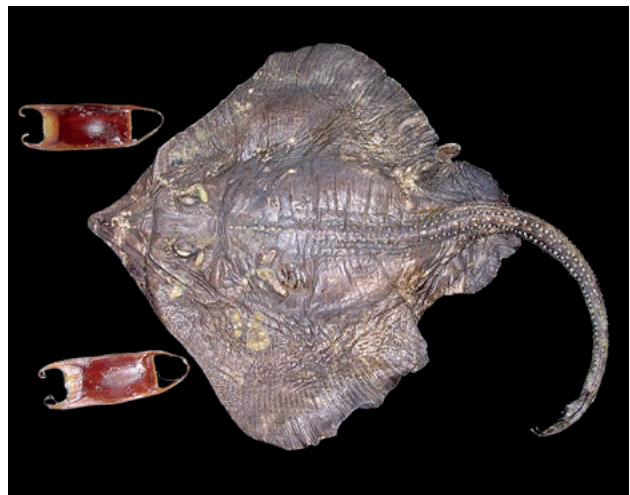
O Alvheim © IMR

Rajella dissimilis, ghost skate, 35 cm DW, dorsal view (South Africa). #



O Alvheim © IMR

Rajella leopardus, leopard skate, 46 cm DW (South Africa).



© DA Ebert, MLML

Rajella ravidula, smoothback skate with egg cases, 79 cm TL (South Africa). #

= no species account

Family **RAJIDAE**, Hardnose skates



O Alvrheim © IMR

Rostroraja alba, white skate, 25 cm DW, juvenile (Mozambique).



PC Heemstra © NRF-SAIAB

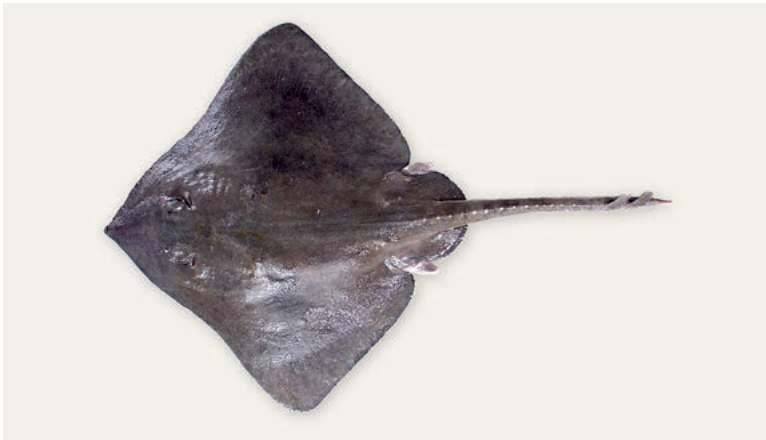
Rostroraja alba, white skate, 28 cm DW, dorsal view (South Africa).



PC Heemstra © NRF-SAIAB

Rostroraja alba, white skate, 28 cm DW, ventral view (South Africa).

Family **ARHYNCHOBATIDAE**, Softnose skates



O Alvrheim © IMR

Bathyraja smithii, softnose skate, 98 cm TL (Namibia).

Family **ANACANTHOBATIDAE**, Legskates



PC Heemstra © NRF-SAIAB

Anacanthobatis marmorata, spotted legskate, 17 cm DW (Mozambique).

Family **GURGESIELLIDAE**, Pygmy skates



PC Heemstra © NRF-SAIAB

Cruriraja parcomaculata, triangular legskate, 17 cm, 7 cm and 4 cm DW (S Mozambique).



© Alvhelm © IMR

Cruriraja hulleyi, roughnose legskate, 23 cm DW (South Africa).



© S Weigmann, ZMH

Indobatis ori, black legskate, 22 cm TL, juvenile male (S Mozambique). #

= no species account

Family **HEXATRYGONIDAE**, Sixgill stingray



O Alvheim © IMR

Hexatrygon bickelli, sixgill stingray, 68 cm DW, juvenile male (S Mozambique).

Family **PLESIOBATIDAE**, Deepwater stingray



O Alvheim © IMR

Plesiobatis daviesi, deepwater stingray, 43 cm DW (S Mozambique).

Family **DASYATIDAE**, Stingrays



© C Caine

Bathytoshia brevicaudata, short-tail stingray, 24 cm DW (South Africa).



PC Heemstra © NRF-SA IAB

Bathytoshia lata, thorn-tail stingray, 42 cm DW (South Africa).

Family **DASYATIDAE**, Stingrays



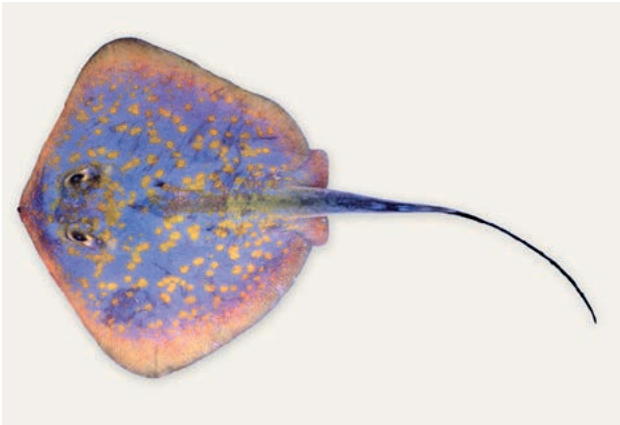
© T Krajangdara, AFDEC

Brevitrygon imbricata, Bengal whipray, 37 cm TL, 18 cm DW, female (Thailand).



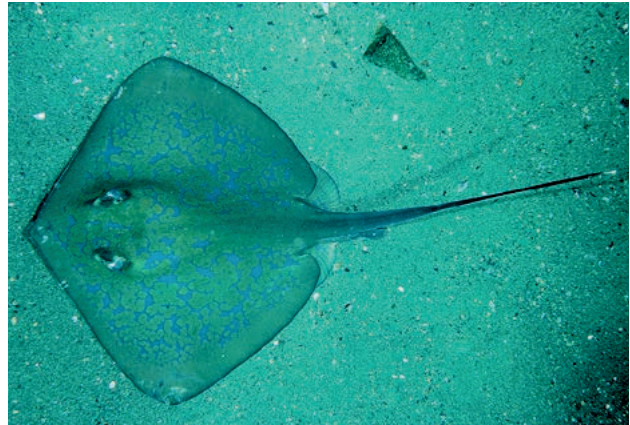
© JE Randall, Bishop Museum

Brevitrygon walga, scaly whipray, 35 cm TL (Kuwait).



PC Heemstra © NRF-SAIAB

Dasyatis chrysonota, blue marbled stingray, 51 cm TL, 29 cm DW (South Africa).



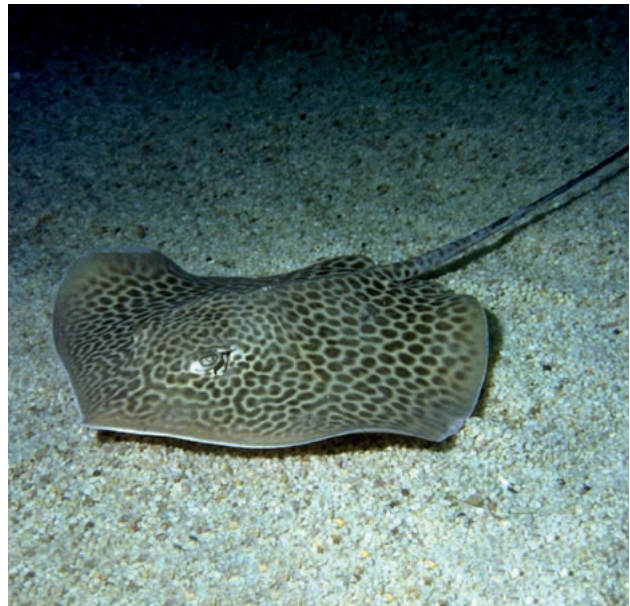
© JE Randall, Bishop Museum

Dasyatis chrysonota, blue marbled stingray (South Africa).



© Alvhelm © IMR

Himantura leoparda, leopard whipray, 99 cm DW (Mozambique).



© DR King

Himantura uarnak, reticulate whipray (South Africa).

Family **DASYATIDAE**, Stingrays



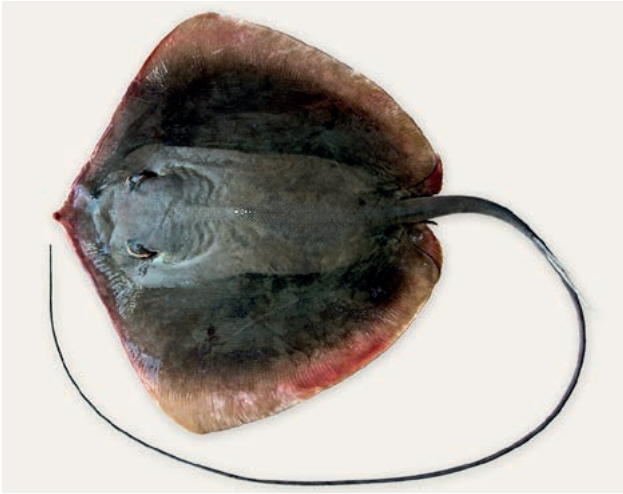
© M. Mwale © NRF-SA/AB

Himantura undulata, honeycomb whipray (Tanzania).



© Alvheim © IMR

Maculabatis ambigua, Baraka's whipray, 28 cm DW (Mozambique).



© SV Bogorodsky

Maculabatis ambigua, Baraka's whipray, 49 cm DW, immature male holotype (Red Sea).



© SV Bogorodsky

Maculabatis ambigua, Baraka's whipray, 49 cm DW, immature male holotype (Red Sea).



© W White, CSIRO

Maculabatis arabica, Pakistan whipray, 33 cm DW, juvenile female holotype (Pakistan).



© JE Randall, Bishop Museum

Maculabatis bineeshi, short-tail whipray, 98 cm TL, 33 cm DW (Bahrain).

Family **DASYATIDAE**, Stingrays



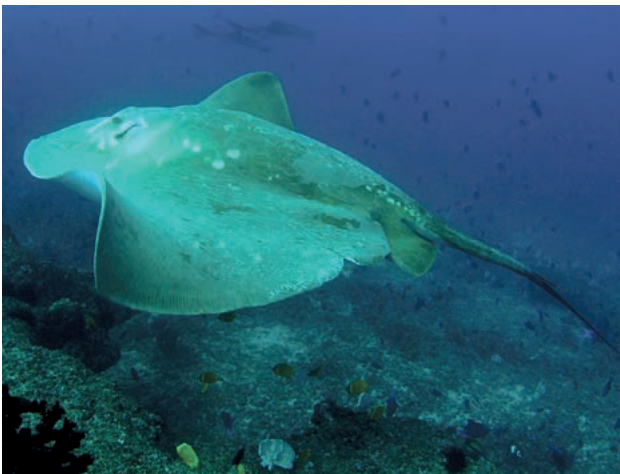
KV Akhilesh © CMFRI

Maculabatis gerrardi, whitespotted whipray, 62 cm TL, 23 cm DW (SW India).



© JE Randall, Bishop Museum

Maculabatis randalli, Arabian banded whipray, 76 cm TL, 24 cm DW (Kuwait).



© AD Marshall

Megatrygon microps, small-eye stingray (S Mozambique).



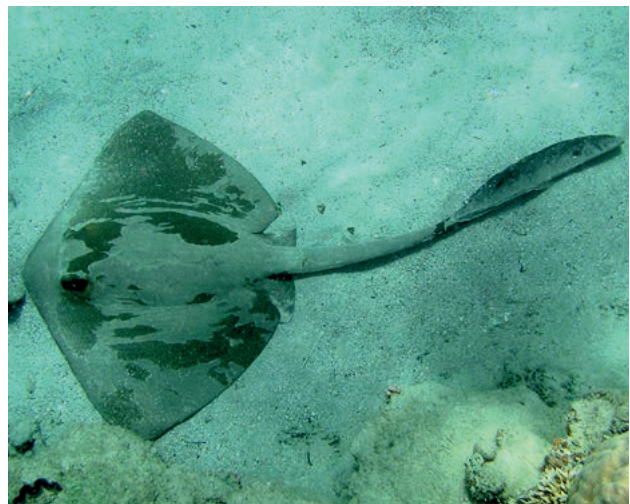
© JE Randall, Bishop Museum

Neotrygon caeruleopunctata, blue-spotted maskray, 55 cm TL (India).



© J Dench

Neotrygon caeruleopunctata, blue-spotted maskray (South Africa).



© SV Bogorodsky

Pastinachus ater, broad cowtail ray (Red Sea).

Family **DASYATIDAE**, Stingrays



© JE Randall, Bishop Museum

Pastinachus sephen, cowtail stingray, 24 cm DW (Kuwait).



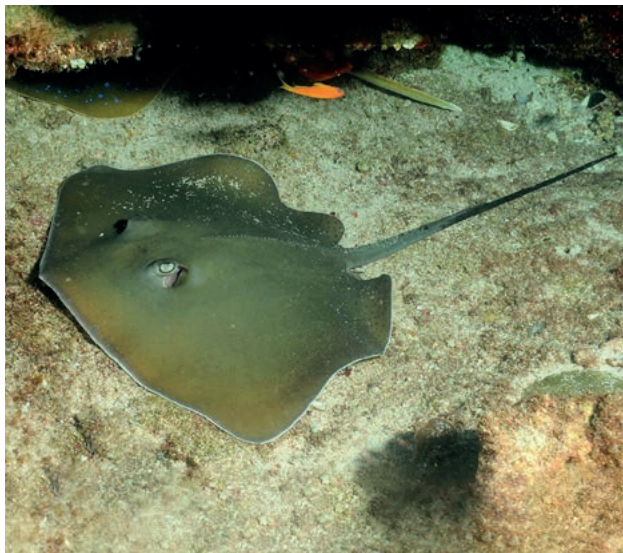
© T Krajangtara, AFDEC

Pateobatis bleekeri, Bleeker's whipray, 77 cm DW, female, 2 larger thorns in midback denticle band inset (Thailand).



© B Mann, ORI/SAAMBR

Pateobatis fai, pink whipray (South Africa).



© DR King

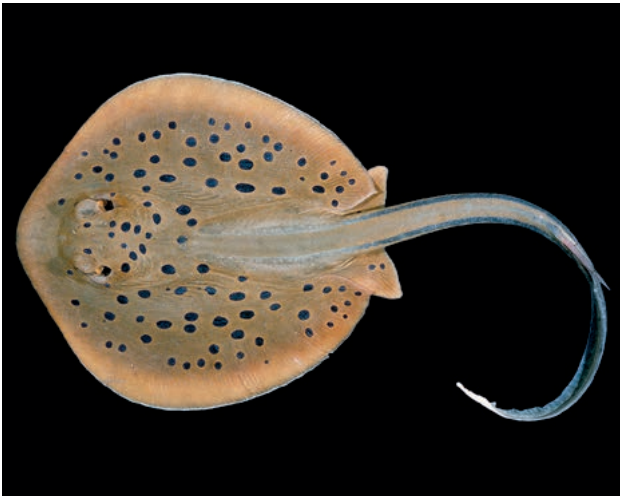
Pateobatis jenkinsii, Jenkins whipray (S Mozambique).



PC Heemstra © NRF-SAAB

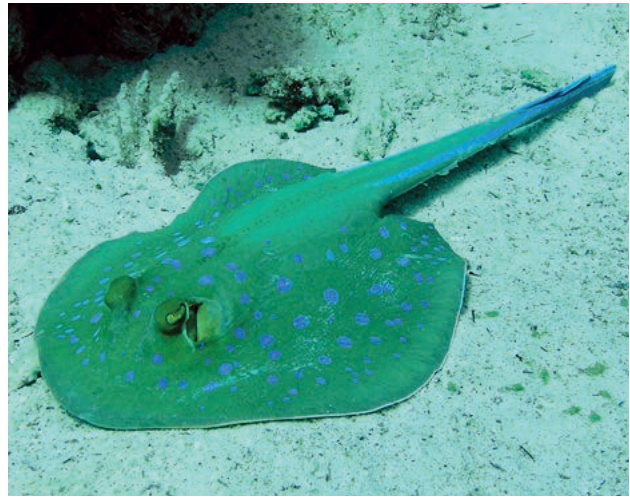
Pteroplatytrygon violacea, pelagic stingray, 54 cm DW, female (South Africa).

Family **DASYATIDAE**, Stingrays



© JE Randall, Bishop Museum

Taeniura lymma, blue-spotted ribbontail ray, 52 cm TL, 22 cm DW (Kuwait).



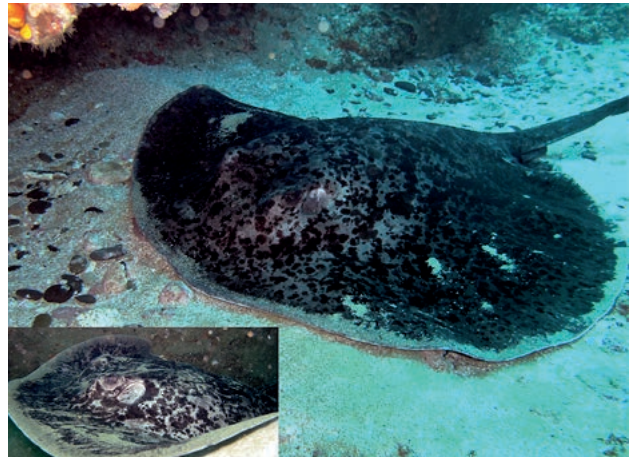
© SV Bogorodsky

Taeniura lymma, blue-spotted ribbontail ray (Red Sea).



© DA Polack

Taeniura lymma, blue-spotted ribbontail ray (South Africa).



© J Dench

Taeniurops meyeni, blotched fantail ray (South Africa).



© M Manjaji-Matsumoto, BMRI-UMS

Telatrygon biasa, Indonesian sharpnose ray, 19 cm DW (Malaysia). #

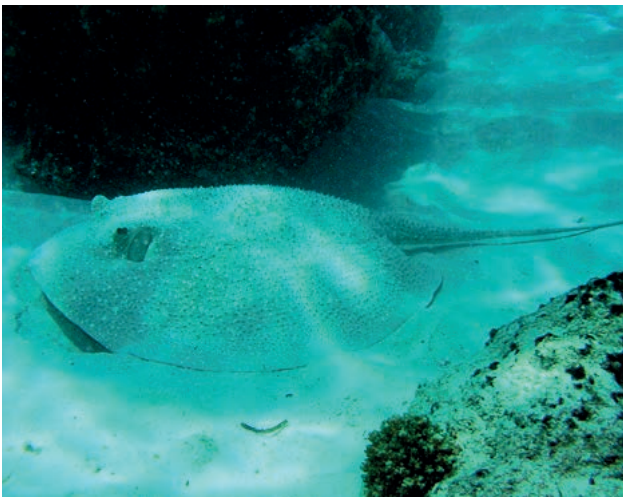
= no species account



© Khin May Chit-Maung

Telatrygon crozieri, Indian sharpnose ray, 70 cm TL, 23 cm DW (Myanmar).

Family **DASYATIDAE**, Stingrays



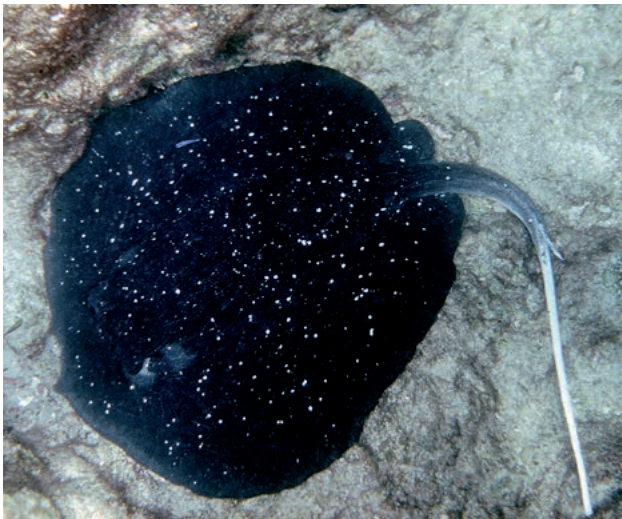
KA Moots © INRF-SAIAB



© K Eifer

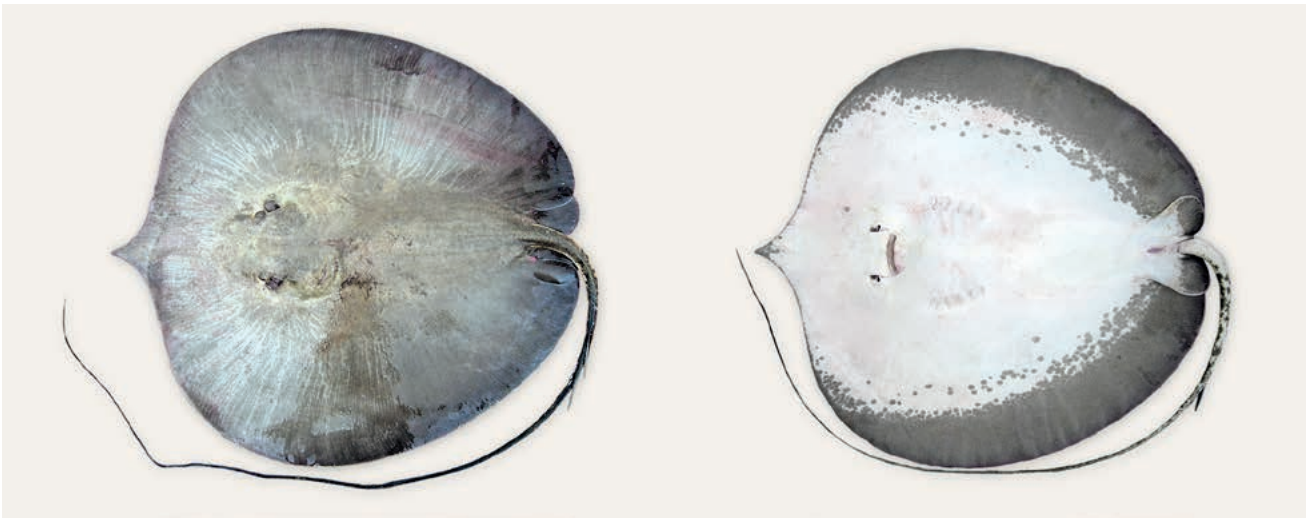
Urogymnus asperrimus, porcupine ray (Seychelles).

Urogymnus asperrimus, porcupine ray, disc margin damaged (Tanzania).



© JE Randall, Bishop Museum

Urogymnus granulatus, mangrove whipray (Maldives).



© M Manjaji-Matsumoto, BMRI-UWS

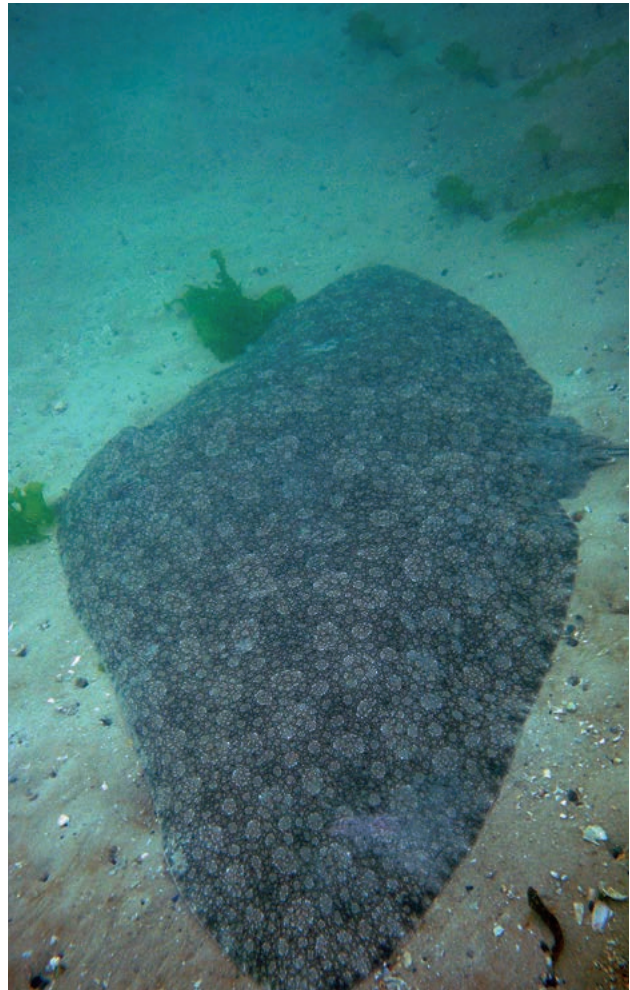
Urogymnus polylepis, giant freshwater whipray (Malaysia).

Family **GYMNURIDAE**, Butterfly rays



© S Chater, ORI/SAAMBR

Gymnura natalensis, diamond ray, 95 cm DW (South Africa).



© C van der Colff

Gymnura natalensis, diamond ray (South Africa).



© J.E. Randall, Bishop Museum

Gymnura poecilura, longtail butterfly ray, 28 cm TL (Bahrain).



© SV Bogorodsky

Gymnura poecilura, longtail butterfly ray, 75 cm TL, 89 cm DW, female, ventral view (Red Sea).



© S Weigmann, ZMH

Gymnura tentaculata, tentacled butterfly ray, juvenile male, 35 cm DW (Arabian Sea).

Family **GYMNURIDAE**, Butterfly rays



© K-T Shao, ASIZ

Gymnura zonura, zonetail butterfly ray (Taiwan).

Family **MYLIOBATIDAE**, Eagle rays



© S Weigmann, ZMH

Aetomylaeus ?maculatus, 35 cm DW, preserved specimen (Arabian Sea).



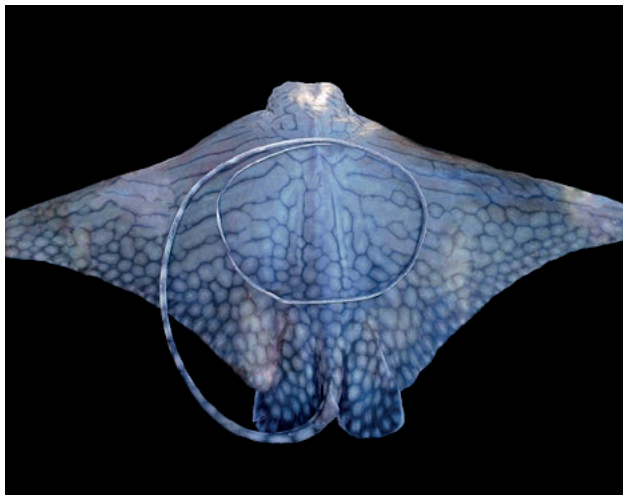
© SG Rezvani, IFRO

Aetomylaeus milvus, ocellate eagle ray (Iran).



© JE Randall, Bishop Museum

Aetomylaeus nichofii, banded eagle ray, 92 cm TL, 54 cm DW (Persian/Arabian Gulf).



KK Bineeth © CMFRI

Aetomylaeus vespertilio, ornate eagle ray (SW India).

Family **AETOBATIDAE**, Pelagic eagle raysFamily **MYLIOBATIDAE**, Eagle rays

AETOBATIDAE: 1 *Aetobatus narinari*, spotted eagle ray, 146 cm DW (S Mozambique).

MYLIOBATIDAE: 2 *Aetomylaeus nichofii*, banded eagle ray, 54 cm DW, 92 cm TL (Persian/Arabian Gulf). 3 *Aetomylaeus bovinus*, bull ray, (a) 86 cm DW, female, (b) 22 cm DW, unborn pup (both South Africa).* 4 *Aetomylaeus* sp. (Maldives). # 5 *Myliobatis aquila*, common eagle ray, 128 cm DW (Mozambique).

Family **MYLIOBATIDAE**, Eagle rays

O. Alvheim © IMR

Myliobatis aquila, common eagle ray, 69 cm DW (Mozambique).

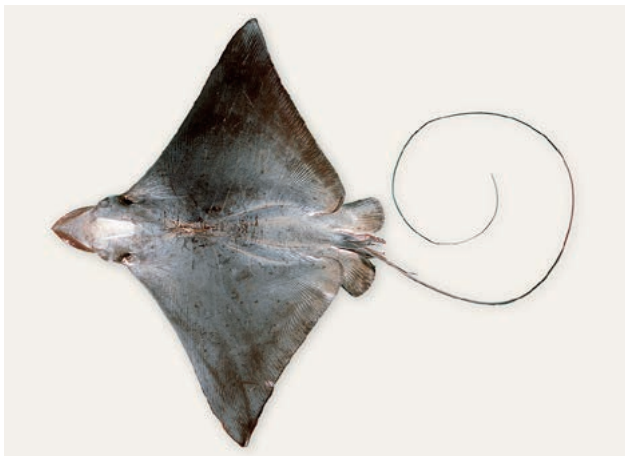


O. Alvheim © IMR

Myliobatis aquila, common eagle ray, 50 cm DW (Mozambique).

* Source: CFSa # = no species account

Family **AETOBATIDAE**, Pelagic eagle rays



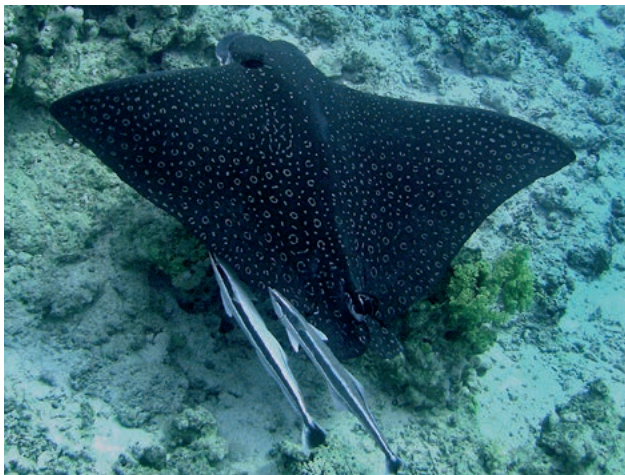
© J.E.Randall, Bishop Museum

Aetobatus flagellum, longheaded eagle ray (Persian/Arabian Gulf).



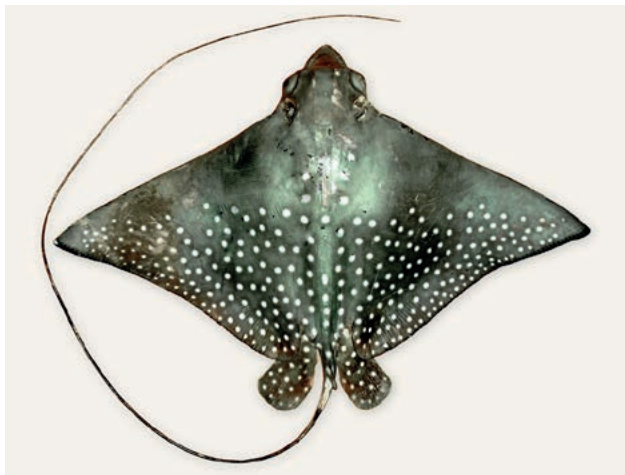
© S.V. Bogorodsky

Aetobatus narinari, spotted eagle ray (Red Sea).



© S.V. Bogorodsky

Aetobatus narinari, spotted eagle ray (Red Sea).



© H.B. Osmani

Aetobatus ocellatus, ocellated eagle ray, 80 cm DW (Pakistan).

Family **RHINOPTERIDAE**, Cownose rays



© W.White, CSIRO

Rhinoptera javanica, flapnose ray, 70 cm DW (Indonesia).



© S.V. Bogorodsky

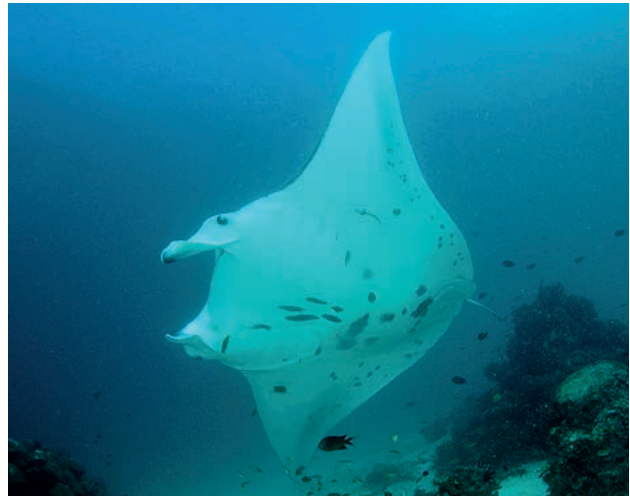
Rhinoptera jayakari, short-tail cownose ray, 74 cm TL (Red Sea).

Family **MOBULIDAE**, Devilrays



© AD Marshall

Mobula alfredi, reef manta ray (Maldives).



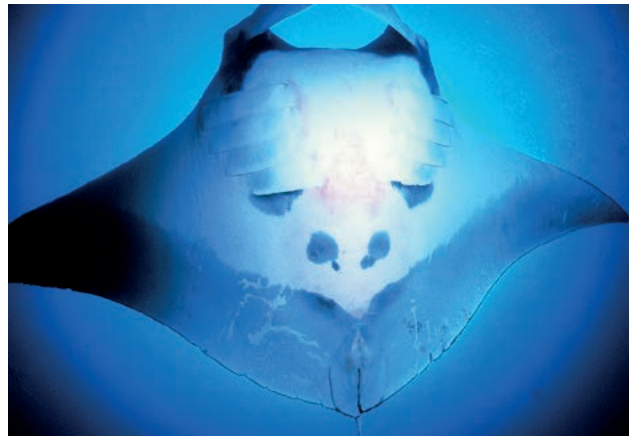
© DR King

Mobula alfredi, reef manta ray, ventral view (Indonesia).



© AD Marshall

Mobula birostris, giant manta ray (Mozambique).



© AD Marshall

Mobula birostris, giant manta ray, ~5 m DW, ventral view (S Mozambique).



© AD Marshall

Mobula kuhlii, pygmy devilray (S Mozambique).



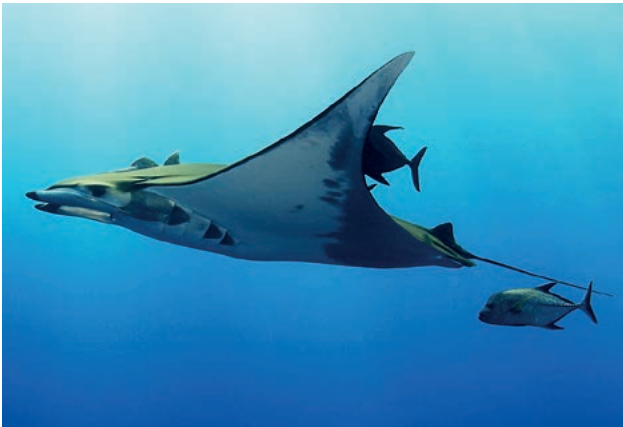
© AD Marshall

Mobula kuhlii, pygmy devilrays schooling (S Mozambique).

Family **MOBULIDAE**, Devilrays



1 *Mobula birostris*, giant manta ray, ~4 m DW, immature male, dorsal view (South Africa); ventral view (Mozambique). **2** *Mobula eregoodoo*, longhorned devilray, female (Madagascar). **3** *Mobula kuhlii*, pygmy devilray, 110 cm DW, male (Mozambique). **4** *Mobula mobular*, spinetail devilray (Pakistan). **5** *Mobula thurstoni*, bentfin devilray, 180 cm DW (Oman).



© AD Marshall

Mobula tarapacana, sicklefin devilray (Mexico).



© JE Randall, Bishop Museum

Mobula thurstoni, bentfin devilrays (S Eritrea).

Family **CALLORHINCHIDAE**, Elephantfishes



Source: CESA

Callorhinchus capensis, Cape elephantfish, 49 cm to rear of 2nd dorsal fin, mature male (South Africa).



PC Heemstra © NRF-SAI/AB

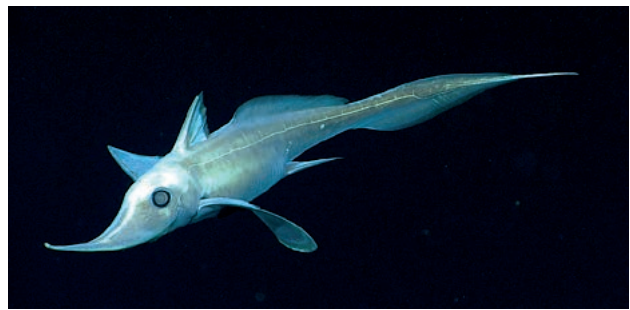
Callorhinchus capensis, Cape elephantfish, 36 cm TL, head (South Africa).

Family **RHINOCHIMAERIDAE**, Longnose chimaeras



© S Weigmann, ZMH

Harriotta raleighana, narrownose chimaera, 44 cm TL, female, preserved specimen (Atlantic Ocean).



© NOAA, Public Domain

Harriotta raleighana, narrownose chimaera (Atlantic Ocean, USA).



O Alvhheim © IMR

Neoharriotta pinnata, sicklefin chimaera, 102 cm TL, male (Namibia).



O Alvhheim © IMR

Neoharriotta pinnata, sicklefin chimaera, 99 cm TL, female (Namibia).



© S Weigmann, ZMH

Neoharriotta pumila, Arabian sicklefin chimaera, 62 cm TL, adult male paratype, preserved specimen (off Socotra).